

Boxes and Banks - Index

No.	Item name	Manufacturer	Year	ID
1	Kutije za džepni sat ili džepni barometar		1860s-1890s	264
2	Kutija limena u obliku seoske kućice	Unknown	1900s-1920s	52
3	Ukrasna kutija	Wed J. Bekkers Zoon	1900s-1920s	441
4	Sparautomat	Stollwerck AG	1910s	20
5	Sparautomat	Stollwerck AG	1910s	19
6	Kutija za kekse	Heinrich Haerberlein Hof-Lebkuchen	1920s	408
7	Keramik Deckeldose Art Deco		1930s	243
8	Limene kasice 2		1930s	269
9	Limene kasice 5 komada	Made in Germany	1930s-1960s	72
10	Limene kutije za školske spužvice	Unknown	1940s	12
11	Kasica u obliku pseće kućice 1		1940s	18
12	Kutije limene za spužvice	Unknown	1940s	104
13	Kasica u obliku pseće kućice 2	D.G.M.	1940s	409
14	Kasica u obliku kućice		1940s	456
15	Kasice limene	Various	1940s-1960s	239
16	Limene kantice dječje	Various	1940s-1960s	157
17	Kasice sa brojčanicom	Geobra Brandstätter	1940s-1970s	403
18	Kutija limena za kekse	Unknown	1950s	57
19	Kutija limena osmerokutna	Unknown	1950s	58
20	Kasice		1950s-1960s	391
21	Kasice bankarske	Stahlblech-Prägung	1950s-1970s	107
22	Limene kutije novije	Various	1950s-2000s	79
23	Kasice limene razne	Various	1950s-1980s	235
24	Kasica Ptica u kućici + OVP	LBZ	1960s	41
25	Limena kutija Jadran	Kandit	1960s	311
26	Ivica i Marica limena kutija	E. Otto Schmidt	1970s	11
27	Limene kutije u obliku kućica		1980s-1990s	187
28	Limena kutija Trolejbus	Marks & Spencer	2000s	324
29	Limene kutije kamioni	Walkers & Lambertz	2000s	422
30	Limene ukrasne kutije (Keksdose) 4 kom.	Amarantum	2010s	251



ID

264

Item name

Kutije za džepni sat ili džepni barometar

Manufacturer

Year

1860s-1890s

Category

Box/Bank

Description

This is a charming post-war mechanical tin toy savings box, brightly lithographed and featuring a delightful bank scene with various children and animals interacting with the cashier at a red tray window. It activates via a sliding mechanism that reveals the cashier (nicknamed "bankster") and a tray for placing a coin. Once the small button over the dog on the left side is pressed, the mechanism closes and the coin drops into the bank.

Dimensions

Diameter 7-8 cm

Visual condition

Good

Functionality

Functional

BOXES AND BANKS



ID

052

Item name

Kutija limena u obliku seoske kućice

Manufacturer

Unknown

Year

1900s-1920s

Category

Box/Bank

Description

S bravom, bez ključa

This is a lithographed tinplate storage box shaped like a small house or cottage, with detailed printed illustrations on all sides. Originally designed for cookies or biscuits, likely as a promotional tin for a bakery or confectionery. The tin features charming domestic scenes and commercial storefront motifs, typical of early 20th-century European designs.

Dimensions

25 × 15 × 15 cm

Visual condition

Good

Functionality

Functional

BOXES AND BANKS



ID

441

Item name

Ukrasna kutija

Manufacturer

Wed J. Bekkers Zoon

Year

1900s-1920s

Category

Box/Bank

Description

Charming and richly detailed antique tin container featuring color lithographed scenes of children playing with pets, dolls, and a toy sailboat. The panels are framed in a beveled octagonal style with gilded Art Nouveau flourishes. Multilingual inscriptions ("Épices", "Specerijen", "Sucre", etc.) suggest use as a general spice or confectionery container. The lid shows a girl playing with a dog, continuing the playful, nostalgic theme. Likely intended for storage or promotional use.

Dimensions

18 × 10 × 10 cm

Visual condition

Good

Functionality

Functional

BOXES AND BANKS



ID

020

Item name

Sparautomat

Manufacturer

Stollwerck AG

Year

1910s

Category

Box/Bank

Description

Vrlo malo oštećenje boje

Tinplate mechanical chocolate/savings automat, designed to resemble a miniature storefront. The front is lithographed with "Victoria" branding, a vendor lady illustration, and two chocolate compartments labeled "Schokolade." Back features a fairytale scene (Hansel & Gretel). These automats were originally intended to dispense chocolate or act as novelty coin banks.

Dimensions

27 cm

Visual condition

Very Good

Functionality

Functional

BOXES AND BANKS



ID

019

Item name

Sparautomat

Manufacturer

Stollwerck AG

Year

1910s

Category

Box/Bank

Description

Mechanical tin chocolate vending and savings box styled as a 1910-era automaton. Lithographed with ornate decorations and labeled "Stollwerck Victoria Spar-Automat." Combines advertising display with money box function; simulates vending machine mechanism with coin deposit and visible compartments.

Dimensions

27 cm

Visual condition

Excelent

Functionality

Functional

BOXES AND BANKS



ID

408

Item name

Kutija za kekse

Manufacturer

Heinrich Haerberlein Hof-
Lebkuchen

Year

1920s

Category

Box/Bank

Description

A lithographed tin container in the shape of a traditional German half-timbered house with dormer windows and chimney, featuring an attached metal bell. Produced by Heinrich Haerberlein, a prestigious Nuremberg-based confectionery manufacturer known for Lebkuchen and chocolates. The design includes colourful domestic scenes on the front and company branding with medal illustrations on the reverse.

Dimensions

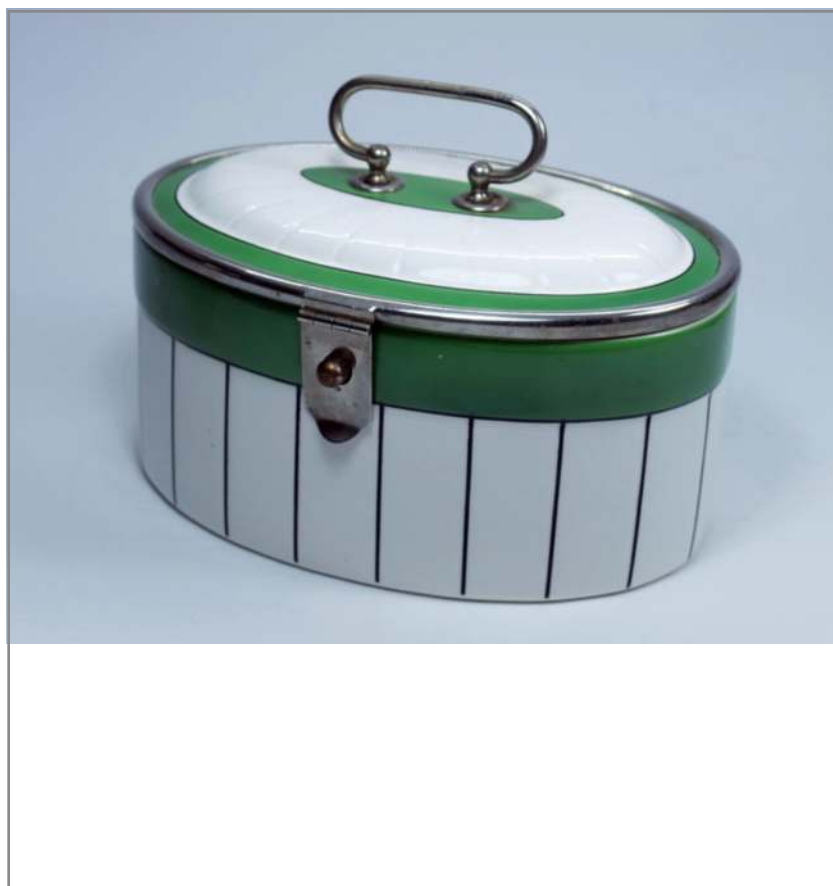
W22 x D15 x H17 cm

Visual condition

Excelent

Functionality

Functional



ID

243

Item name

Keramik Deckeldose Art Deco

Manufacturer

Year

1930s

Category

Box/Bank

Description

Oval-shaped ceramic lidded box with distinctive Art Deco design: white base with vertical black lines, a green glazed upper band, and a domed white lid with green center and chromed metal handle and latch. Originally marketed for multi-use: as a biscuit tin, bonbonnière, or kitchen storage (fish pot). Unmarked by maker but stamped with model numbers on base.

Dimensions

21 x 14 x 11 cm

Visual condition

Excelent

Functionality

Functional

BOXES AND BANKS



ID

269

Item name

Limene kasice 2

Manufacturer

Year

1930s

Category

Box/Bank

Description

2 komada - dva psa i djevojčica na prozoru + vještichja kuća iz bajke o Ivici i Marici, bez ključeva

Pair of vintage lithographed tin banks, one depicting a candy house ("Hexenhaus") scene reminiscent of Hansel and Gretel, and the other featuring a teller at a bank window. Both have mechanical features (lever-activated) typical of mid-century tinplate toys, possibly dating earlier (pre-1945). No maker's mark is identified, but stylistic and mechanical design suggest German origin (possibly Günthermann or similar lesser-known manufacturer).

Dimensions

12-15 cm

Visual condition

Very Good

Functionality

Functional

BOXES AND BANKS



ID

072

Item name

Limene kasice 5 komada

Manufacturer

Made in Germany

Year

1930s-1960s

Category

Box/Bank

Description

Kasa knjiga, kasa trezor crvena, kasa trezor zelena, kućica za psa (mala, no name), kućica Snjeguljica i 7 patuljaka (Keim), US zone Germany

This is a curated set of 5 collectible tin lithographed mechanical or architectural-style piggy banks, each with colorful and detailed illustrations. The group includes two coin-operated "vending machine" style banks, two house-shaped banks with fairy tale designs, and one book-style bank with a hiker motif. All are of post-war German origin, likely exported in the 1940s–60s.

Dimensions

Visina 12-16 cm

Visual condition

Very Good

Functionality

Functional

BOXES AND BANKS



ID

012

Item name

Limene kutije za školske spužvice

Manufacturer

Unknown

Year

1940s

Category

Box/Bank

Description

This is a cohesive set of four round tinplate sponge containers from postwar Germany, each featuring a charming lithographed illustration in bright enamel colors. These tins were commonly used by schoolchildren in the 1940s–1950s to hold a damp sponge used for cleaning slate writing tablets. The whimsical motifs range from animals and playful children to imaginative scenes of daily life, capturing the naïve innocence and graphic style typical of German children's products from this era.

Dimensions

5,5 x 3 cm

Visual condition

Very Good

Functionality

Functional

BOXES AND BANKS



ID

018

Item name

Kasica u obliku pseće kućice 1

Manufacturer

Year

1940s

Category

Box/Bank

Description

Made in U.S. Zone Germany, marked D.G.M.

A lithographed mechanical tinplate bank in the shape of a doghouse. This post-war toy features a whimsical dog motif: when the lever is pushed, the dog's tongue extends, and a coin can be placed on it, which is then drawn back into the bank. Wind-up mechanism with key.

Dimensions

13 x 8.5 x 7 cm

Visual condition

Mint

Functionality

Functional

BOXES AND BANKS



ID

104

Item name

Kutije limene za spužvice

Manufacturer

Unknown

Year

1940s

Category

Box/Bank

Description

This is a charming collection of seven mid-century aluminum sponge tins (Schwamm Dosen), originally used by German schoolchildren in the 1940s and 1950s. These tins once held a damp sponge for cleaning slate boards, and each features colorful lithographed illustrations on the lid, showcasing playful children or gnome-like figures in vivid postwar design typical of the era.

Dimensions

D5.5 cm; H3 cm

Visual condition

Excelent

Functionality

Functional

BOXES AND BANKS



ID

409

Item name

Kasica u obliku pseće kućice 2

Manufacturer

D.G.M.

Year

1940s

Category

Box/Bank

Description

Small lithographed tinplate mechanical coin bank in the shape of a doghouse. The front features a dog's head with a mechanical tongue mechanism. When the side lever is pushed and a coin is placed on the tongue, the mechanism retracts, pulling the coin inside. The sides are decorated with colorful animal motifs (dog, duck, bird) and floral designs. Supplied with a small key for access to the coin compartment.

Dimensions

13.0 × 8.5 × 7.0 cm

Visual condition

Excelent

Functionality

Functional

BOXES AND BANKS



ID

456

Item name

Kasica u obliku kućice

Manufacturer

Year

1940s

Category

Box/Bank

Description

This is a charming post-war mechanical tin toy savings box, brightly lithographed and featuring a delightful bank scene with various children and animals interacting with the cashier at a red tray window. It activates via a sliding mechanism that reveals the cashier (nicknamed "bankster") and a tray for placing a coin. Once the small button over the dog on the left side is pressed, the mechanism closes and the coin drops into the bank.

Dimensions

13.0 × 7.0 × 8.3 cm

Visual condition

Excelent

Functionality

Functional

BOXES AND BANKS



ID

239

Item name

Kasice limene

Manufacturer

Various

Year

1940s-1960s

Category

Box/Bank

Description

Starije (kućice i sl.), vrijedne, 10-tak komada

This lot includes 10 distinct vintage lithographed tin coin banks, many of them mechanical or animated in nature. Each bank features a unique theme, ranging from fairy tales and transportation to children, games, and advertising scenes. These were typically produced in postwar Germany for domestic and export markets and intended as novelty savings banks or promotional giveaways. Some include moving parts triggered by coin insertion or wind-up action.

Dimensions

Visual condition

Very Good

Functionality

Functional

BOXES AND BANKS



ID

157

Item name

Limene kantice dječje

Manufacturer

Various

Year

1940s-1960s

Category

Box/Bank

Description

3 komada, jedna KRZ Karl Rohrseitz

This listing comprises three distinct vintage tin sand pails from Germany, each bearing charming lithographed illustrations and distinctive color schemes. These toys were designed for beach or sandbox play and are now cherished as collectible nostalgic items. Each pail showcases different scenes: children with lanterns, children in a cart pulled by a goose (Karl Rohrseitz), and children riding a donkey and a monkey (Grill, Schorndorf).

Dimensions

H11-14 cm

Visual condition

Excelent

Functionality

Functional

BOXES AND BANKS



ID

403

Item name

Kasice sa brojčanikom

Manufacturer

Geobra Brandstätter

Year

1940s-1970s

Category

Box/Bank

Description

A lot of three vintage mechanical tinplate savings banks with coin counter windows. Each features a different lithographed design depicting children at play or interacting with a coin machine, in bright mid-century style. The mechanism registers the deposited coin value (in Pfennig, Mark, or Escudo) on the dial. Designed to accept a coin of the correct denomination, after which the lever increments the display until a preset total is reached, triggering the opening mechanism.

(two pieces marked in German currency, one in Portuguese Escudo suggesting export model)

Dimensions

approx. height 13-15 cm

Visual condition

Very Good

Functionality

Functional

BOXES AND BANKS



ID

057

Item name

Kutija limena za kekse

Manufacturer

Unknown

Year

1950s

Category

Box/Bank

Description

Starija, veća, oznaka "Family 1900"

Decorative rectangular tin box featuring detailed lithographed scenes of domestic life, including kitchen and children's play motifs on all sides and lid. The illustrations are highly stylized, typical of mid-20th century German graphic design. Possibly a promotional or packaging item for baked goods.

Dimensions

30 × 24 × 13 cm

Visual condition

Good

Functionality

Functional

BOXES AND BANKS



ID

058

Item name

Kutija limena osmerokutna

Manufacturer

Unknown

Year

1950s

Category

Box/Bank

Description

Djevojčica, dječak i mačka; made in UK

Charming vintage candy tin container, likely from the mid-20th century, made of lithographed tinfoil. It features colorful illustrations of children and a cat in a tree, with playful pastoral design elements. The tin is octagonal in shape, and was originally produced as a sweets container — possibly from a UK-based manufacturer under the "12 MB Container" mark.

Dimensions

12 x 12 x 3 cm

Visual condition

Very Good

Functionality

Functional

BOXES AND BANKS



ID

391

Item name

Kasice

Manufacturer

Year

1950s-1960s

Category

Box/Bank

Description

Four small, rectangular tinplate savings banks lithographed to resemble tied-up postal parcels with string and address labels. Each has a coin slot on the top and a keyhole on the bottom for opening (keys not visible in images, but two of them are available). The lithography features bright colors, faux string wrapping, and printed destination labels in various styles.

Dimensions

H12-17 cm

Visual condition

Good

Functionality

Functional

BOXES AND BANKS



ID

107

Item name

Kasice bankarske

Manufacturer

Stahlblech-Prägung

Year

1950s-1970s

Category

Box/Bank

Description

8 komada, od toga 2 sa ključem

This is a collection of 8 vintage tinplate savings banks (“Heimsparkassen” or home savings boxes) from West Germany, dating between the 1950s and 1970s. These were promotional items distributed by regional banks to encourage saving habits in children and families. Made of lacquered steel with a chrome handle and locking lid, each is engraved or labeled with the issuing institution and an individual serial number.

Dimensions

9.5 × 7.5 × 5.5 cm

Visual condition

Excelent

Functionality

Functional

BOXES AND BANKS



ID

079

Item name

Limene kutije novije

Manufacturer

Various

Year

1950s-2000s

Category

Box/Bank

Description

This is a curated batch of decorative lithographed tin containers originally intended for cookies, candies, or sweets. The designs mimic storefronts, cottages, carousels, or nostalgic branding, blending vintage advertising with playful illustration. The lot includes both vintage originals and later reproductions with retro styling, often released as limited or promotional editions.

Dimensions

Various

Visual condition

Excelent

Functionality

BOXES AND BANKS



ID

235

Item name

Kasice limene razne

Manufacturer

Various

Year

1950s–1980s

Category

Box/Bank

Description

This is a curated collection of thirteen distinct tin lithographed banks produced by D.R.K.Z. in Western Germany during the 1950s–1980s. The assortment includes classic coin banks and rare mechanical and musical types. Each features charming mid-century illustration styles with themes ranging from circus scenes, fairy tales, British postboxes and phone booths, toy shops, tents, and everyday children's life. One bank in this set (mushroom-shaped) includes a mechanical musical feature that plays when cranked, while others are straightforward slot banks with detachable bases or key-operated locking mechanisms.

Dimensions

H10-15 cm

Visual condition

Good

Functionality

BOXES AND BANKS



ID

041

Item name

Kasica Ptica u kućici + OVP

Manufacturer

LBZ

Year

1960s

Category

Box/Bank

Description

Mechanical savings bank featuring a lithographed tin house with forest animals and a boy. When the side crank is turned, a bird emerges from the house, opens its beak, grabs the coin, and deposits it into the bank. Highly imaginative and visually whimsical, made as both a toy and a functional piggy bank.

Dimensions

14 x 7 cm

Visual condition

Mint

Functionality

Functional



ID

311

Item name

Limena kutija Jadran

Manufacturer

Kandit

Year

1964

Category

Box/Bank

Description

An oval lithographed tin container used for packaging "Jadran Dessert" (filled chocolate dessert) produced by Kandit, a confectionery company from Osijek (now Croatia, formerly Yugoslavia). The lid and body are printed with sepia-toned illustrations of historic Adriatic coastal scenes and sailing ships, suggesting a maritime/Jadran theme aimed at evoking heritage and elegance.

Dimensions

Visual condition

Good

Functionality

BOXES AND BANKS



ID

011

Item name

Ivica i Marica limena kutija

Manufacturer

E. Otto Schmidt

Year

1970s

Category

Box/Bank

Description

Rectangular vintage tin box with richly illustrated fairy tale-themed scenes, made by E. Otto Schmidt of Germany. The artwork appears to depict characters from Hansel and Gretel, with lush green background and detailed figures including animals, children, and forest elements. Originally used for holiday cookies or confections. Known for their collectible holiday packaging, Otto Schmidt tins are popular for both display and seasonal reuse.

Dimensions

Visual condition

Excelent

Functionality

Functional

BOXES AND BANKS



ID

187

Item name

Limene kutije u obliku kućica

Manufacturer

Year

1980s-1990s

Category

Box/Bank

Description

Set of 4 Vintage House-Shaped Advertising Tins

Cadbury Chocolates Collectible Biscuit Shop Tin

Edwardian Coffee House Tin Container

Bindley Sweets & Toffees Confectionery House by Silver Crane (1993)

Vintage "Pet Shop" Xmas Scene Tin by Armitage Bros. PLC

Dimensions

10-12 cm

Visual condition

Very Good

Functionality

Functional



ID

324

Item name

Limena kutija Trolejbus

Manufacturer

Marks & Spencer

Year

2000s

Category

Box/Bank

Description

This is a novelty collectible biscuit tin designed in the shape of a classic double-decker tram, originally sold by Marks & Spencer (UK). Decorated in rich green and cream enamel with illustrated passengers visible through the tram "windows", this tin originally contained a cookie selection. It's an item produced as part of seasonal or promotional packaging, designed to be kept as a keepsake or reused after the contents are gone.

Dimensions

25.9 × 9.6 × 15.1 cm

Visual condition

Very Good

Functionality

BOXES AND BANKS



ID

422

Item name

Limene kutije kamioni

Manufacturer

Walkers & Lambertz

Year

2000s

Category

Box/Bank

Description

Walkers Shortbread Truck – Red tartan-patterned tin with biscuit graphics, driver/passenger illustration, hinged removable lid. Marked with ingredients, branding, and best-before date (30.07.2007). Dimensions: approx. 23 × 12 × 13 cm.

Lambertz Lebkuchen Truck – Red/white truck tin decorated with gingerbread wall motif, gold-colored spoked wheels, driver illustration, hinged lid. Marked with product details, ingredients, and best-before date (30.05.2007). Dimensions: approx. 33.5 × 13 × 16 cm.

Dimensions

Visual condition

Excelent

Functionality

Functional

BOXES AND BANKS



ID

251

Item name

Limene ukrasne kutije (Keksdose)
4 kom.

Manufacturer

Amarantum

Year

2010s

Category

Box/Bank

Description

A playful set of 4 decorative tin boxes styled to resemble retro household items and vehicles. Though designed in vintage fashion, these are modern-made (c. 2016) collectible tins, primarily used for storage, gifting, or decor. Made from lithographed sheet metal, with movable parts on some (e.g., handles, wheels).

Dimensions

Opisano u dokumentu

Visual condition

Mint

Functionality

Functional