

Toys - Index

No.	Item name	Manufacturer	Tt Year	ID
1	Kočija OHO	Lehmann	1900s	420
2	Kočija Naughty Boy	Lehmann	1900s	448
3	Tricikl sa dvije osobe	Lehmann	1900s-1930s	457
4	Alabama Coon Jigger	Lehmann	1910s	70
5	Postolar	Bing	1910s	425
6	Kočija crveno-crna	Lehmann	1910s	447
7	Kočija ""ALSO 700""	Lehmann	1910s	449
8	Klaun sa magarcem	Lehmann	1910s	458
9	Drvosječa	Bing	1910s	459
10	Kovač u kućici	Fleischmann	1920s	285
11	Ford Model T Sedan ""19872""	Bing	1920s	445
12	Obučar ""Schuhmacher""	Bing	1920s	360
13	Mesar pravi kobasice	Doll & Co.	1920s	421
14	Toonerville Trolley + OVP	Nifty	1920s	437
15	Ford Model T Sedan	Bing	1920s	446
16	Oštrač	Bing	1920s	461
17	Ritterturnier (Viteški turnir)	Gebrüder Einfalt (later Technofix)	1930s	252
18	Railroad Handcar	Girard	1930s	46
19	Männer an Sägebock und Kreissäge ""2	Arnold	1930s	128
20	Limena kolica s posteljnom i bebom - ozn. 157		1930s	224
21	Dječje limene modle za igre u pijesku	Goeso	1930s	274
22	Oštrač	Girard	1930s	47
23	Skeeter Duck + OVP	Lindstrom USA	1930s	63
24	Original Spirale za pogon strojeva-igračaka	Bing	1930s	261
25	Schiffschaukel sa 2 čamca	Wilhelm Kraus	1930s	85
26	Humphrey Mobile	Wyandotte	1930s	276
27	Scherenschleifer (oštrač)	Arnold	1930s	242
28	Bumper Skeeter Bug	Lindstrom, USA	1930s	68
29	Čovjek gura prtljagu	Gescha	1930s	369
30	Motorist A-754	Arnold	1930s	383
31	Helikopter mali	Technofix / Einfalt	1930s	413
32	Dječak na triciklu	Unique Art Mfg. Co.	1930s	439
33	Spremačica	Lindstrom	1930s	440
34	Dječak na triciklu		1930s	452

Toys - Index

No.	Item name	Manufacturer	Tt Year	ID
35	Uskrni zečevi	Lehmann	1930s-1950s	399
36	Vodene bojice male	Hans Rebhan (H.R.)	1940s	111
37	Modle za pijesak	Unknown	1940s	112
38	Vrtuljak na navijanje sa 3 aviona	Krauss?	1940s	73
39	Bunar zeleni + OVP	Fleischmann	1940s	29
40	Dječje limene kantice	Various	1940s	273
41	Ketten Karusel	Hoch & Bechmann	1940s	124
42	Plesni par Pepeljuga i Princ	Wells & Co.	1940s	153
43	Karusel na navijanje sa 4 aviona	Hoch & Bechmann	1940s	40
44	Avioni rezervni	Hoch & Bechmann	1940s	74
45	Karusel sa 3 aviona	Unknown	1940s	101
46	Wendebahn Nr. 570	Arnold	1940s	256
47	Kantica sa ""ružom"" za zalijevanje	Karl Rohrseitz	1940s	114
48	Kolica za prtljagu velika	ZMF	1940s	368
49	Motorist A 643	Arnold	1940s	380
50	Garaža za auto	Lehmann	1940s	396
51	Sanjke - dječak s crvenom kapom	Gescha	1940s	364
52	Sanjke - dječak s plavom kapom		1940s	365
53	Majmun bez ičega	Köhler	1940s	374
54	Majmun na triciklu	C. K. Arnold & Co.	1940s	375
55	Maca sa loptom + OVP	Köhler	1940s	377
56	Medvjed + OVP	Voith	1940s	379
57	Motor mali br.11	Huki Nürnberg (HKN)	1940s	389
58	Auto Sedan iz garaže	Lehmann	1940s	404
59	TRI-ANG Minic + OVP	Lines Bros. Ltd.	1940s	411
60	Tank A 585 + OVP	Arnold	1940s	417
61	Tank PN-380 + OVP	Paul Niedermeier	1940s	418
62	Patka	Gescha	1940s	450
63	Vjetrenjača mala	Unknown	1940s	517
64	Vjetrenjača velika	Unknown	1940s	518
65	Dječje okrugle limene kantice	Various	1940s-1960s	110
66	Slonić na biciklu sa suncobranom	Unknown	1950s	7
67	Dienstmann + OVP	Hans Geiger	1950s	87
68	Kirmes Schiffschaukel (ljuljačka s 4 čamca)	A. Brückner	1950s	123

Toys - Index

No.	Item name	Manufacturer	Tt Year	ID
69	Vrtuljak veliki	Unknown	1950s	89
70	Skating Bear Trio	TPS Japan	1950s	267
71	Tenk A680 s metalnim gusjenicama	Arnold	1950s	53
72	Karusel s avionima	Hoch & Bechmann	1950s	15
73	Aerodromska zgrada + 4 aviona na dvije žice	Hoch & Bechmann	1950s	125
74	Cable Car Seilbahn (žičara) oznaka 303 + OVP	Technofix	1950s	158
75	Anglerspiel (ribič) sa 3 limene ribice	Blech & Spielwaren	1950s	255
76	Modle 3 komada i lopatica za pijesak + OVP		1950s	54
77	Kolica limena	K Japan	1950s	188
78	Beba u hodalici	Unknown from Japan	1950s	189
79	Biller ""Bimbo"" + OVP	Hans Biller	1950s	69
80	Limena kolica s posteljinom - ozn. 344		1950s	225
81	Boxkampf	Rühl	1950s	1
82	Remote Control Helicopter no.090 + OVP	Biller	1950s	278
83	Kirmes Riesenrad	Blomer & Schüler	1950s	103
84	Žičara mala	Georg Fischer	1950s	288
85	Crazy Clown + OVP	Yonezawa	1950s	237
86	HEINI no.507	Lehmann	1950s	142
87	Geduldspiele	Unknown	1950s	13
88	Karusel sa 4 gondole na valovitoj podlozi	Blömer & Schüler	1950s	66
89	Set za pijesak i ostalo	Göso	1950s	83
90	Sladoledar sa zvonom i štapom	Courtland USA	1950s	48
91	Koffermann	Fritz Voit	1950s	23
92	Karusel - veći sa 4 aviona	Hoch & Bechmann	1950s	265
93	Vatrogasno vozilo HS 510	Hans Schumann	1950s	2
94	Čamac-2	Michael Seidel	1950s	118
95	Pribor za autodrom	Hoch & Bechmann	1950s	88
96	Kupatilo diorama	Göso	1950s	67
97	Avioni za veliki vrtuljak	Unknown	1950s	30
98	Federi za navijanje igračkaka		1950s	260
99	Brdo za sanjkanje		1950s	283
100	Riesenrad (cirkuski kotač) sa 4 sjedala + OVP	Hoch & Bechmann	1950s	272
101	Avion Oldtimer Fighting Plane + OVP	Suzuki & Edwards, Japan	1950s	27
102	Kistenschieber (čovjek gura sanduk) Wüco	Fritz Wünerlein & co.	1950s	253

Toys - Index

No.	Item name	Manufacturer	Tt Year	ID
103	Noisemaker (puckalica)	Unknown	1950s	98
104	Riesenrad	Hoch & Bechmann	1950s	16
105	Rudnik no.294	Technofix	1950s	95
106	Zračna luka s 4 zrakoplova	Hoch & Bechmann	1950s	203
107	Klauni glazbeni (par)	Emil Hausmann	1950s	8
108	Zvrk limeni 2	Karl Rohrseitz (Zirndorf), MFZ, Fuchs	1950s	116
109	Dječja kolica	Likely German	1950s	3
110	Riesenrad tip 25	Hoch & Bechmann	1950s	6
111	Dock Yard Crane + OVP	Line Mar Toys	1950s	280
112	Kovač sa nakovnjem	Fleischmann	1950s	359
113	Auti na sudaranje od Autodroma		1950s	367
114	Psi sa kobasicom + OVP	Niedermeier	1950s	376
115	Motoristi na skuteru no.282	Technofix	1950s	390
116	Vrtuljak sa četiri brodića	Blomer & Schüler	1950s	397
117	Express-Boy + OVP	Gescha	1950s	398
118	Radnik s kutijom	WUCO	1950s	400
119	Auto HP-001 + OVP	HPZ	1950s	410
120	Tank T.60	GAMA	1950s	414
121	Sladoledar MZ 556	Unknown	1950s	419
122	Oštrač	Arnold	1950s	424
123	Kolica za prtljagu velika	Finnegan	1950s	438
124	Djevojčica s loptom	TPS (Tokyo Plaything Shokai)	1950s	442
125	Isetta 700 auto	Bandai, Japan	1950s	362
126	Kolica sa novinama	Märklin	1950s	363
127	Tank A 585	Arnold	1950s	366
128	Čovjek gura prtljagu 2	Gescha	1950s	370
129	Kofferträger	Fritz Voit	1950s	371
130	Kofferträger Model No. 661	MS (Martin Schmidt) Brandenburg	1950s	372
131	Majmun na autiću + OVP	Köhler	1950s	378
132	Motorist MAC 700	Arnold	1950s	381
133	Motorist JW	Joseph Wagner	1950s	382
134	Red Toy Car (old)	Japan	1950s	386
135	Đokej na konju + OVP	Göso	1950s	388
136	Gliser 2035 + OVP	Arnold	1950s	412

Toys - Index

No.	Item name	Manufacturer	Tt Year	ID
137	Manuvrier Tank M 65-5 + OVP	Gescha	1950s	415
138	Pas s loptom	Fritz Voigt	1950s	443
139	Patka s kolicima i pačićima	Lehmann	1950s	451
140	Motorist narančasti		1950s	453
141	Motoristi na skuteru no.282	Technofix	1950s	454
142	Mlinar	Fleischmann	1950s	460
143	Kutija od vrtuljka		1950s	530
144	Glazbeni dječji limeni mlinovi	Various	1950s-1960s	257
145	Baby pribor za čišćenje komplet	VEB Waschnittelwerk Genthin (ATA)	1950s-1960s	100
146	Zvrk limeni 1	Rohrseitz	1950s-1970s	81
147	Remote Control Helicopter - Tischspiel + OVP	Biller	1960s	281
148	Country tour"" 301	Technofix	1960s	229
149	Dva zeca na navijanje (1 s korpom na leđima)	Köhler	1960s	194
150	Veš mašina na navijanje	Yonezawa (Japan)	1960s	14
151	Sabena Helibus br. 5100	Arnold	1960s	226
152	Camping 304 + 2 auta + 2 ključa + OVP	Technofix	1960s	61
153	Speedboat Hurricane	Michael Seidel	1960s	117
154	Majmun na kotaču	Köhler	1960s	373
155	Apollo UFO Nr. 562		1960s	401
156	Manuvrier Tank M 65-5	Gescha	1960s	416
157	Speed King bumper-car	Yoshiya	1960s	455
158	Loop the Loop	Technofix	1960s	801
159	Geduldspiele	Unknown	1960s-1980s	99
160	Vogel 5900 - Ptica limena s ključem + OVP	Veb Spielwaren GDR	1970s	51
161	Red Toy Car (new) + OVP	Schylling	1970s	385
162	Bijeli Martini Shell auto	Lemezaru Gyar (HU)	1970s	387
163	Toonerville Trolley electric	Rich Art Tin / C&M Enterprises	1980s	232
164	Toonerville Trolley electric	C&M Enterprises	1980s	233
165	Toonerville depot	Rich Art (C&M Enterprises)	1980s	60
166	Torpeauto crveni + OVP	Unknown	1980s	384
167	Avion Kranich Flugzeug	Düsseldorfer Spilzeug Manufaktur (DSB)	1990s	50
168	Sladoledar	Tucher & Walter	1990s	49
169	Wartburg 311 coupe model vozila	Revell	2000s	80
170	Model bicikla BIANCHI	Unknown	2000s	97

Toys - Index

No.	Item name	Manufacturer	T Year	ID
171	Old-Smoky™ Parni valjak s priborom	Wilesco	2000s	292
172	Kutija od Motora A-560	Arnold	2000s	462
173	Robotić + OVP	Walter & Prediger	2000s	529
174	Gusjenice nove gumene za Gama T-60 tenk	Classic Tin Toy Company (USA)	2010s	262

TOYS



ID

420

Item name

Kočija OHO

Manufacturer

Lehmann

Year

1900s

Category

Toy

Description

A classic early 20th-century German tinplate toy depicting a seated driver in a green open runabout marked "OHO" on each side. The figure is lithographed with fine facial features and period clothing, and the vehicle is fitted with red-spoked wheels with silver rims. This is a clockwork wind-up model with a front tiller steering column, typical of Lehmann's engineering from the Edwardian era. The toy combines both charm and mechanical ingenuity, representing Lehmann's approach to novelty vehicles at the time.

Dimensions

L10 cm

Visual condition

Very Good

Functionality

Functional

TOYS



ID

448

Item name

Kočija Naughty Boy

Manufacturer

Lehmann

Year

1900s

Category

Toy

Description

A charming and humorous lithographed tin wind-up toy depicting a young boy playfully tugging at the driver's steering lever while seated together in an open automobile. This early German Lehmann toy captures a whimsical moment and was designed with moving parts to animate the boy's mischief. These vehicles were produced for export markets and featured patented mechanical systems admired for their ingenuity.

Dimensions

17.5 x 8.5 14 cm

Visual condition

Very Good

Functionality

Functional

TOYS



ID

457

Item name

Tricikl sa dvije osobe

Manufacturer

Lehmann

Year

1900s-1930s

Category

Toy

Description

This is a rare and visually striking early 20th-century German tinplate wind-up toy known as the "New Century Cycle," manufactured by Lehmann. The toy depicts a whimsical scene of a well-dressed gentleman riding a three-wheeled cabriolet, accompanied by a seated figure at the rear who rotates a parasol above them. When wound, the toy travels forward and the front figure tips his hat while the rear figure spins the umbrella. The toy references early pedal-engine cabs and was inspired by the designs of Berlin engineer Hermann Ganswindt.

Dimensions

L12.5 cm

Visual condition

Very Good

Functionality

Functional

TOYS



ID

070

Item name

Alabama Coon Jigger

Manufacturer

Lehmann

Year

1910s

Category

Toy

Description

Potreban manji popravak

A mechanical tin toy depicting a caricatured African-American man dancing on a decorated platform labeled "ALABAMA COON JIGGER". Manufactured by Lehmann, this toy was part of their ethnic-themed line and features a wind-up mechanism that animates the figure's movement. These toys were produced for Western markets and reflect outdated and offensive racial stereotypes.

Dimensions

Visina 25 cm

Visual condition

Excelent

Functionality

Repair needed

TOYS



ID

425

Item name

Postolar

Manufacturer

Bing

Year

1910s

Category

Toy

Description

Early 20th-century tinplate "operating model" by Bing, depicting a tailor working on a shoe in a domestic interior. Intended as a mechanical accessory for steam engine setups, the model uses a belt drive to animate the figure's arms and head. These working figures were part of educational or novelty displays simulating trades.

Dimensions

11,5 x 11 cm

Visual condition

Very Good

Functionality

Functional

TOYS



ID

447

Item name

Kočija crveno-crna

Manufacturer

Lehmann

Year

1910s

Category

Toy

Description

This is a rare, early 20th-century German tinplate wind-up horseless carriage toy featuring a seated coachman figure. The model represents a transitional design between horse-drawn carriages and early motor vehicles. It includes lithographed details and full mechanical functionality.

Dimensions

12.7 cm (L) × 6.4 cm (W) × 7.6 cm (H)

Visual condition

Mint

Functionality

Functional

TOYS



ID

449

Item name

Kočija "ALSO 700"

Manufacturer

Lehmann

Year

1910s

Category

Toy

Description

This is a vintage tinplate wind-up toy automobile named "ALSO" model no. 700, produced by the renowned German maker Lehmann. It features a figural driver seated in a classic horseless carriage, a design that captures the early era of motoring with charming detail and period accuracy.

Dimensions

16 x 7.5 x 11.5 cm

Visual condition

Excelent

Functionality

Functional

TOYS



ID

458

Item name

Klaun sa magarcem

Manufacturer

Lehmann

Year

1910s

Category

Toy

Description

This charming antique mechanical toy features a colorfully dressed clown figure seated in a chariot-style cart drawn by a felt-covered donkey. The toy operates via a spring wind-up mechanism that propels the cart forward. The wheels are decorated with classic Lehmann lithographed designs, often depicting additional clown heads and circus motifs.

Dimensions

19 x 9.5 x 7.5 cm

Visual condition

Very Good

Functionality

Functional

TOYS



ID

459

Item name

Drvosječa

Manufacturer

Bing

Year

1910s

Category

Toy

Description

This is a tinplate mechanical steam toy accessory depicting a mustachioed man in an apron operating a handsaw on a sawhorse, driven by an external steam engine. Made by Gebrüder Bing, it is catalogued as No. 9956-347 and features a vibrantly lithographed figure in profile. The toy captures the detailed motion of a sawing laborer and was designed as a functional extension to early 20th-century stationary steam engines.

Dimensions

H13 cm

Visual condition

Very Good

Functionality

Functional

TOYS



ID

285

Item name

Kovač u kućici

Manufacturer

Fleischmann

Year

1920s

Category

Toy

Description

Early 20th-century tinplate accessory figure depicting a blacksmith hammering on an anvil, designed to be powered by a live steam engine drive belt. Hand-painted, includes mechanical hammer action. Part of a series of steam-era animated figures.

Dimensions

Base 16 x 11 cm

Visual condition

Good

Functionality

Functional

TOYS



ID

445

Item name

Ford Model T Sedan "19872"

Manufacturer

Bing

Year

1920s

Category

Toy

Description

3 komada

A trio of vintage lithographed tinsplate Ford Model T sedan toys, crafted in Germany by Gebrüder Bing circa early 1920s. All three represent the touring or closed-top sedan body variant with a female driver figure, executed in glossy black enamel finish. Each includes key period details such as front and rear license plates, running boards, and mechanical wind-up motor. Collectively, these items reflect slight variations in condition and presentation, but all retain their distinct charm as early interwar-period mechanical automobiles.

Dimensions

L16.5 x H10 x W7.5 cm

Visual condition

Excelent

Functionality

Functional

TOYS



ID

360

Item name

Obučar "Schuhmacher"

Manufacturer

Bing

Year

1920s

Category

Toy

Description

Lithographed tinplate steam engine accessory depicting a shoemaker at work, seated at a bench with a boot on a last. Designed to be belt-driven from a stationary steam engine, activating the figure's head and hammer in rhythmic motion. Detailed printed background scene with window, birdcage, and wall clock.

Dimensions

11.4 × 7.1 × 11.6 cm

Visual condition

Good

Functionality

Functional

TOYS



ID

421

Item name

Mesar pravi kobasice

Manufacturer

Doll & Co.

Year

1920s

Category

Toy

Description

A vintage live steam accessory model known as the "Wurstmacher" (sausage maker), designed to be powered by a stationary steam engine. The scene depicts a butcher operating a hand-cranked meat grinder, with a sausage chain feeding into a tin bucket. The butcher figure is hand-painted, with detailed facial features and period-appropriate work attire. The machine itself is painted in green with red trim, mounted on a rectangular grey tinplate base with arched supports for the table.

Dimensions

13.5 × 9.5 cm, height 9 cm

Visual condition

Excelent

Functionality

Functional

TOYS



ID

437

Item name

Toonerville Trolley + OVP

Manufacturer

Nifty

Year

1920s

Category

Toy

Description

2 komada + 1 OVP

This early tin lithographed wind-up toy features a cartoonishly exaggerated trolley car with a bent smokestack, tall rooftop antenna, and a bouncing conductor figure protruding from the side. The body is bright red and yellow with "TOONERVILLE TROLLEY" prominently printed on both sides. The trolley rolls forward with motion, causing the conductor to wobble humorously in sync. The base includes functional wheels and a mechanical wind-up mechanism. The version shown appears to be complete and litho-bright, with variations in trim color (e.g., red or blue step plates) across different examples.

Dimensions

H16 cm

Visual condition

Excelent

Functionality

Functional

TOYS



ID

446

Item name

Ford Model T Sedan

Manufacturer

Bing

Year

1920s

Category

Toy

Description

Item 1: 1923 Bing German Tin Ford Model T Coupe with Female Driver

A highly detailed tinplate sedan model representing the Ford Model T Coupe from the early 1920s, produced by Gebrüder Bing. This version includes a seated female driver figure and is designed with meticulous attention to authentic features including license plates, spare tire, and clean body lines. Wind-up mechanism included.

Item 2: 1923 Bing German Tin Ford Model T Coupe (Open Top Variant)

This is another authentic 1923 Ford Model T sedan replica by Bing, differing from the previous in its open-top design. A female driver figure is present. This example showcases a slightly more

Dimensions

L16.5 cm

Visual condition

Excelent

Functionality

Functional

TOYS



ID

461

Item name

Oštrač

Manufacturer

Bing

Year

1920s

Category

Toy

Description

2 komada - jedan bolji, jedan lošiji

This early 20th-century tinplate mechanical figure depicts a scissor grinder operating a large grinding wheel, mounted on a wooden-style base with cast-metal components. The figure, painted in traditional workwear (light blue tunic, striped trousers, and cap), bends forward as he applies scissors to a rotating wheel. The toy is powered by a wind-up clockwork mechanism, which also animates the motion of the large belt-driven flywheel.

Dimensions

18 x 11 x 14 cm

Visual condition

Very Good

Functionality

Functional

TOYS



ID

252

Item name

Ritterturnier (Viteški turnir)

Manufacturer

Gebrüder Einfalt (later Technofix)

Year

1930s

Category

Toy

Description

Mehanizam OK, boja loša, predmet za restauraciju

Clockwork tinplate mechanical toy representing a jousting tournament, featuring two mounted knights on horses that move toward and away from each other when wound. The knights are attached via a tension rod, and the wheels function in tandem with the spring motor to simulate jousting action. The figures and horses are painted in contrasting colors (red/yellow), with period-style helmets and lances. A classic early 20th-century wind-up toy with strong visual appeal and historical value.

Dimensions

30 cm

Visual condition

Good

Functionality

Functional

TOYS



ID

046

Item name

Railroad Handcar

Manufacturer

Girard

Year

1930s

Category

Toy

Description

Potreban popravak, pogon ispravan

This is a vintage tinsplate wind-up railroad handcar toy featuring two lithographed figures operating a central crank. The toy operates via a key-wind mechanism that propels the car forward while the figures reciprocate. Made by Girard, a well-known early 20th-century American tin toy manufacturer, this example is a classic of U.S. Depression-era tin toys.

Dimensions

21 x 11 x 21 cm

Visual condition

Good

Functionality

Repair needed

TOYS



ID

128

Item name

Männer an Sägebock und
Kreissäge "2

Manufacturer

Arnold

Year

1930s

Category

Toy



Description

Dva drvosječe - jedan sa ravnom, drugi sa okretnom pilom

Mechanical steam-toy accessory made of lithographed tinsplate, depicting two workers operating a sawhorse and circular saw. This is part of a series of industrial-themed operating figures by Arnold, designed for steam engine drive. Rare version with two articulated figures, each operating independent tools via gear linkages.

Dimensions

24 x 11 cm x 11.5 cm

Visual condition

Excelent

Functionality

Functional

TOYS



ID

224

Item name

Limena kolica s posteljinom i bebom - ozn. 157

Manufacturer

Year

1930s

Category

Toy

Description

Charming tin litho doll baby carriage with foldable canopy. Beautiful side lithographs depict playful children and animals. Includes original bedding and a small celluloid or composition baby doll (partly defective). Classic early 20th-century European design.

Dimensions

L15 x H11 x W7.5 cm

Visual condition

Good

Functionality

Functional

TOYS



ID

274

Item name

Dječje limene modle za igre u pijesku

Manufacturer

Goeso

Year

1930s

Category

Toy

Description

4 komada

Two separate sets of vividly lithographed tin sand molds, each lot containing two unique mold designs. These vintage beach or sandbox toys are beautifully shaped, highly colorful, and mechanically simple, showing excellent visual appeal. They were marketed as children's summer toys in pre-war and early post-war Germany.

Dimensions

9-10 cm

Visual condition

Mint

Functionality

TOYS



ID

047

Item name

Oštrač

Manufacturer

Girard

Year

1930s

Category

Toy

Description

Tin lithographed mechanical toy featuring a man operating a large grinding wheel. The figure is dressed in red and black with a cap and is fixed to a base labeled "GIRARD MECHANICAL TOYS." The crank mechanism animates the wheel, mimicking a sharpening motion. Designed in classic American tin toy style of the 1930s.

Dimensions

15 x 12 x 8 cm

Visual condition

Good

Functionality

Repair needed

TOYS



ID

063

Item name

Skeeter Duck + OVP

Manufacturer

Lindstrom USA

Year

1930s

Category

Toy

Description

Whimsical 1930s tin lithographed clockwork (wind-up) toy set featuring a colorful duck-shaped bumper car. The toy operates by winding and releasing it to move in erratic bumper-style motions. Original box is included, marked "Skeeter Duck – A Mechanical Toy by Lindstrom No. 55."

Dimensions

15 cm

Visual condition

Excelent

Functionality

Functional

TOYS



ID

261

Item name

Original Spirale za pogon
strojeva-igračaka

Manufacturer

Bing

Year

1930s

Category

Toy

Description

2 kom

Pair of original spiral belts for transmission on steam engine demonstration models or toy setups. Flexible and very thin construction, offering low resistance. Estimated to be over 80 years old, likely dating from the early 20th century.

Dimensions

Promjer 20 cm, debljina 1,5 mm

Visual condition

Excelent

Functionality

TOYS



ID

085

Item name

Schiffschaukel sa 2 čamca

Manufacturer

Wilhelm Kraus

Year

1930s

Category

Toy

Description

Clockwork tinplate model representing a vintage swing boat ride, manufactured by Wilhelm Kraus. This decorative tabletop toy features striped canopy, two suspended boat swings, and painted figures. It is manually operated via a crank mechanism simulating motion. A classic fairground-themed toy from the early 20th century German production.

Dimensions

14 x 14.5 x 8 cm

Visual condition

Good

Functionality

Functional

TOYS



ID

276

Item name

Humphrey Mobile

Manufacturer

Wyandotte

Year

1930s

Category

Toy

Description

USA, rezervni dimnjak je u prikolici, mehanizam na prednjem točku zapinje

Charming 1930s–40s American wind-up tin toy featuring a comic figure, "Humphrey," pedaling a mobile outhouse. When wound, the vehicle propels forward while Humphrey's arm and hat move up and down. Often referred to as "Humphrey Mobile" or "Humphrey's Outhouse," it represents Wyandotte's humorous take on novelty locomotion toys.

Dimensions

23 x 18 cm

Visual condition

Very Good

Functionality

Repair needed

TOYS



ID

242

Item name

Scherenschleifer (oštrač)

Manufacturer

Arnold

Year

1930s

Category

Toy

Description

A vintage tinsplate mechanical toy from the 1930s, depicting a scissors grinder operating a sharpening wheel. Powered by a clockwork mechanism, the figure moves realistically. This model, featuring a hand-painted or lithographed surface and labeled "N462," is a classic example of German pre-war toy craftsmanship by Arnold, known for their animated occupational figures.

Dimensions

15-20 cm

Visual condition

Good

Functionality

Functional

TOYS



ID

068

Item name

Bumper Skeeter Bug

Manufacturer

Lindstrom, USA

Year

1930s

Category

Toy

Description

Clockwork tin lithographed bumper car toy, "Skeeter Bug," featuring two painted tinplate passengers and classic bumper rail. The toy moves in a figure-eight pattern when wound. A classic 1930s American carnival-style toy, this example includes the rare original printed box.

Dimensions

23 x 13 cm

Visual condition

Excelent

Functionality

Functional

TOYS



ID

369

Item name

Čovjek gura prtljagu

Manufacturer

Gescha

Year

1930s

Category

Toy

Description

A 1930s German tinplate wind-up toy by Gescha, depicting a bellboy in a red uniform pushing a brown travel suitcase decorated with travel stickers and the word "Express." The toy operates via a clockwork mechanism that propels the suitcase forward while the bellboy leans into it as if pushing.

Dimensions

Visual condition

Very Good

Functionality

Functional

TOYS



ID

383

Item name

Motorist A 754

Manufacturer

Arnold

Year

1930s

Category

Toy

Description

Vintage German lithographed tinplate wind-up toy depicting a Wehrmacht soldier riding a camouflage-painted motorcycle. The design features bright polychrome camouflage patterns, a uniformed soldier with helmet, detailed printed engine and frame, and a front headlight housing designed to simulate illumination via a flint spark mechanism. Sidewalls of wheels marked "UNION CORD."

Dimensions

L25 cm

Visual condition

Good

Functionality

Functional

TOYS



ID

413

Item name

Helikopter mali

Manufacturer

Technofix / Einfalt

Year

1930s

Category

Toy

Description

A scarce 1930s German tinplate wind-up "Gyro-Plane" penny toy, combining airplane and helicopter design. Features fixed front propeller, large rotating main rotor, and lithographed pilot figure. When wound, the toy propels forward while both propellers spin; the rotor blades can also fold. Painted in bright red with cream striping and yellow tail.

Dimensions

L9 cm

Visual condition

Very Good

Functionality

Functional

TOYS



ID

439

Item name

Dječak na triciklu

Manufacturer

Unique Art Mfg. Co.

Year

1930s

Category

Toy

Description

2 komada

This is a charming and classic American tin lithograph wind-up toy depicting a young boy riding a tricycle. Manufactured by Unique Art Manufacturing Company, the toy features detailed lithographed artwork, including red overalls, striped shirt, and cheerful facial expression. The figure pedals the tricycle when wound, with realistic side-to-side movement and a functioning bell. The underside features blue litho illustrations of running cartoon figures and a "STOP/START" mechanism, as well as clear factory marks: "KIDDY CYCLIST – Unique Art Mfg. Co., Inc., New York & Newark."

Dimensions

21 x 19 x 13 cm

Visual condition

Very Good

Functionality

Functional

TOYS



ID

440

Item name

Spremačica

Manufacturer

Lindstrom

Year

1930s

Category

Toy

Description

This is a tin lithographed mechanical wind-up toy named "Sweeping Katinka," manufactured by Lindstrom. The toy depicts a stylized girl figure dressed in a red bonnet, apron, and striped stockings, holding a broom. When wound, she dances and performs a sweeping motion. The design is whimsical and character-driven, with detailed lithography showing facial features, costume patterns, and domestic motifs (including a cow illustration on the apron). The mechanism is crank-wound, and the toy is fully functional.

Dimensions

H20 cm

Visual condition

Very Good

Functionality

Functional

TOYS



ID

452

Item name

Dječak na triciklu

Manufacturer

Year

1930s

Category

Toy

Description

This is a charming lithographed tin wind-up toy featuring a boy riding a tricycle, characterized by bright, playful colors and stylized cartoon facial features. The toy captures the post-expressionist design trend of 1930s European tin toys, with a cheerful figure in motion powered by a friction or wind-up motor. Though the maker isn't explicitly marked, the design and construction suggest German origin.

Dimensions

Visual condition

Very Good

Functionality

Functional

TOYS



ID

399

Item name

Uskrni zečevi

Manufacturer

Lehmann

Year

1930s-1950s

Category

Toy

Description

Two vintage tin lithographed wind-up rabbits.

The red-brown rabbit is depicted standing upright, wearing a red bow tie and carrying a lithographed basket of painted eggs. Flocked ears, fine litho fur pattern, and marked "Made in US Zone Germany" on the underside.

The green seated rabbit features a crouched pose with hinged tin ears that rise when the mechanism is wound and activated. Marked "D.R.G.M. Germany" on the underside.

Dimensions

1. H9 cm; 2. L7 cm

Visual condition

Excelent

Functionality

Functional

TOYS



ID

111

Item name

Vodene bojice male

Manufacturer

Hans Rebhan (H.R.)

Year

1940s

Category

Toy

Description

A post-war children's watercolor paint box made of lithographed tinplate, featuring colorful illustrations of a boy with a toy train, a dog with a paint palette, and a clown with a paintbrush. Marked "Made in U.S.-Zone Germany," indicating production in the American-occupied sector between 1945 and the mid-1950s.

Dimensions

11 x 6.5 cm

Visual condition

Good

Functionality

Functional

TOYS



ID

112

Item name

Modle za pijesak

Manufacturer

Unknown

Year

1940s

Category

Toy

Description

20-tak komada; postojao je unos ID:113 samo lopatice iz ovog seta, ali sam ga obrisao

A colorful and diverse set of 36 small sand molds made from repurposed tin materials, including post-war food tins and lithographed tinplate. Shapes include animals (crabs), abstract motifs, and symbols such as hearts, stars, bells, and horseshoes. Some show litho decoration, others are raw or painted tin.

Dimensions

3-6 cm

Visual condition

Very Good

Functionality

TOYS



ID

073

Item name

Vrtuljak na navijanje sa 3 aviona

Manufacturer

Krauss?

Year

1940s

Category

Toy

Description

Neispravan feder, US zone Germany

Wind-up tinplate carousel toy featuring three suspended airplane gondolas rotating around a central pole under a lithographed canopy. Designed in bright litho colors, the toy mimics a fairground attraction. Operates mechanically with a spring motor and bell chime.

Dimensions

H23 cm, Base 12 x 12 cm

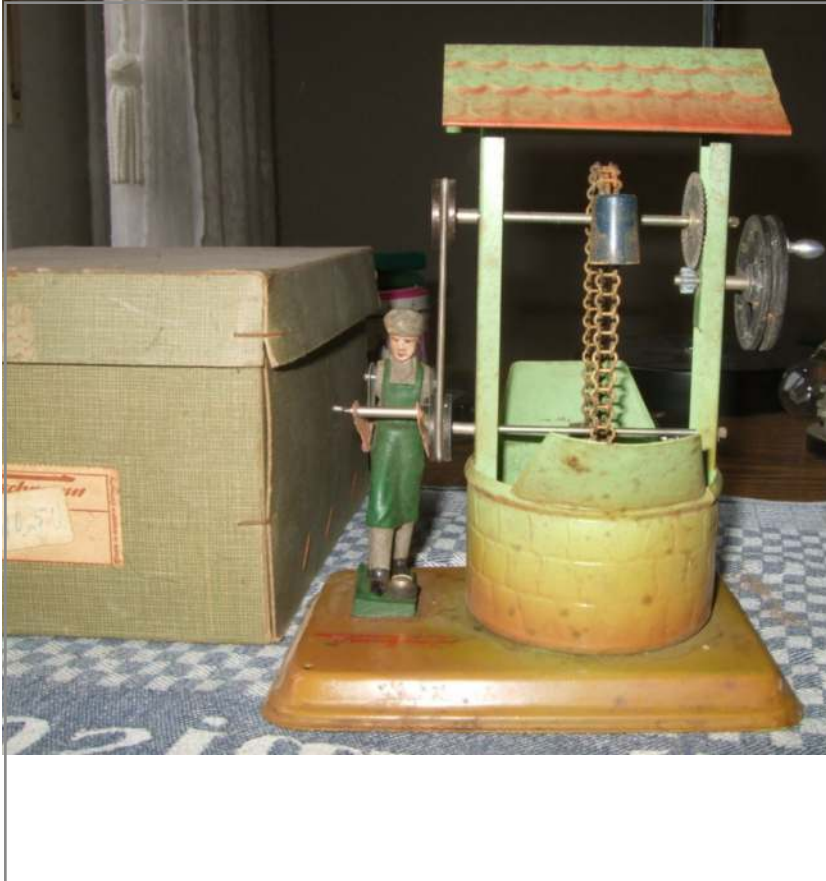
Visual condition

Very Good

Functionality

Not functional

TOYS



ID

029

Item name

Bunar zeleni + OVP

Manufacturer

Fleischmann

Year

1940s

Category

Toy

Description

This is a vintage tinplate toy well produced by Fleischmann, featuring a manually operated mechanism that raises and lowers a bucket via crank and chain. A painted tin figure stands beside the well, enhancing the display value. Originally intended as a mechanical accessory in a toy landscape.

Dimensions

16 x 13 x 9 cm

Visual condition

Very Good

Functionality

Functional

TOYS



ID

273

Item name

Dječje limene kantice

Manufacturer

Various

Year

1940s

Category

Toy

Description

This set comprises two beautifully lithographed tinplate sand pails from postwar Germany, each featuring distinctive motifs that reflect mid-century European toy design. The first pail presents vivid scenes from classic Grimm's fairy tales — Hansel and Gretel alongside Red Riding Hood — rendered in expressive colors and playful detail. The second pail embraces a geometric design featuring cheerful schoolchildren framed in yellow diamonds, surrounded by floral elements on a bold red ground. Both pails are equipped with original swing handles and finished interiors, matching the color scheme of their exteriors.

Dimensions

Approx. H12 cm

Visual condition

Excelent

Functionality

Functional

TOYS



ID

124

Item name

Ketten Karusel

Manufacturer

Hoch & Beckmann

Year

1940s

Category

Toy

Description

Za dijelove

Large tin wind-up fairground carousel by Hoch & Beckmann, made in the U.S. Zone of Germany. It features beautifully lithographed circus-themed artwork, six tin swing seats with figures of seated children, and a robust base with stairs and entry detail. A mechanical clockwork drive under the base rotates the carousel. This version includes the often-missing canopy and shows detailed lithography across its surfaces.

Dimensions

H22 cm

Visual condition

Good

Functionality

Not functional

TOYS



ID

153

Item name

Plesni par Pepeljuga i Princ

Manufacturer

Wells & Co.

Year

1940s

Category

Toy

Description

Disney licenca, na navijanje + OVP, Made in UK

Wind-up tin toy featuring Cinderella and Prince Charming dancing, made by A. Wells & Co. Ltd., produced under Walt Disney Mickey Mouse Ltd. permission. This is an early version (circa late 1940s to early 1950s) before Marx Toys made later plastic versions. The pair rotates when wound. Comes with original illustrated box.

Dimensions

12.5 cm

Visual condition

Excelent

Functionality

Functional

TOYS



ID

040

Item name

Karusel na navijanje sa 4 aviona

Manufacturer

Hoch & Bechmann

Year

1940s

Category

Toy

Description

Colorful mechanical tinplate carousel with six suspended airplanes, operated by wind-up clockwork mechanism with bell and integrated key. Marked "Germany USA Zone," indicating early post-WWII production (late 1940s to early 1950s). Features lithographed decorative panels and vibrant coloring, typical of West German toy exports during the occupation period.

Dimensions

H22 cm

Visual condition

Excelent

Functionality

Functional

TOYS



ID

074

Item name

Avioni rezervni

Manufacturer

Hoch & Bechmann

Year

1940s

Category

Toy

Description

2 komada

A pair of original tin lithographed biplanes, designed as component parts for a mechanical airplane carousel toy by Hoch & Beckmann (or similar postwar German makers). Each plane includes its original suspension rod and bright litho detailing. These parts were sold as genuine spares for carousel restoration or completion.

Dimensions

10-12 cm

Visual condition

Very Good

Functionality

Functional

TOYS



ID

101

Item name

Karusel sa 3 aviona

Manufacturer

Unknown

Year

1940s

Category

Toy

Description

Pogon na potez, US zone Germany

A vintage mechanical tin toy carousel made by Hoch & Beckmann, featuring four tinplate airplanes suspended on rods, rotating around a central column when wound. It operates via a clockwork mechanism and features bright lithographed designs with playful children on the canopy.

Dimensions

16 cm

Visual condition

Good

Functionality

Functional

TOYS



ID

256

Item name

Wendebahn Nr. 570

Manufacturer

Arnold

Year

1940s

Category

Toy

Description

Rastavljen, treba zamijeniti gumicu, stara i nova gumica su u kutiji.

This is a mechanical tinplate turn train set ("Wendebahn") made in postwar Germany by Arnold. The set includes a lithographed track base, central station building, clockwork-driven locomotive with one coach, and its original, colorfully illustrated cardboard box. The train travels to the end of the line, reverses automatically, and returns—an iconic Arnold mechanism from the era.

Dimensions

38 cm

Visual condition

Good

Functionality

Repair needed

TOYS



ID

114

Item name

Kantica sa "ružom" za zalijevanje

Manufacturer

Karl Rohrseitz

Year

1940s

Category

Toy

Description

Vintage tin toy watering can, brightly lithographed with child and animal motifs (girl with hen on one side, white rabbit on the other). Manufactured by Karl Rohrseitz, a known German tin toy maker based in Zirndorf, likely pre-1945 but marked "Made in Western Germany", suggesting early postwar export version.

Dimensions

12 cm

Visual condition

Excelent

Functionality

Functional

TOYS



ID

368

Item name

Kolica za prtljagu velika

Manufacturer

ZMF

Year

1940s

Category

Toy

Description

Wind-up tin toy featuring a railway station porter in a blue uniform and red cap pushing a luggage cart with a large trunk marked with travel labels. The cart is red with silver wheels and features lithographed details. The trunk is removable and lithographed with travel stickers ("London-Berlin", "From-Paris"). The porter figure is fixed to the cart and connected to the wind-up mechanism, which powers movement.

Dimensions

L20 x W8 x H12 cm

Visual condition

Excelent

Functionality

Functional

TOYS



ID

380

Item name

Motorist A 643

Manufacturer

Arnold

Year

1940s

Category

Toy

Description

Vintage lithographed tinplate wind-up motorcycle toy featuring a male rider in brown and yellow riding attire with helmet and goggles. The bike is predominantly red with white and black detailing, marked "A643" on the license plate and "Union Cord" on tires. The headlamp includes a flint spark mechanism. Equipped with stabilizing side wheels and a clockwork motor.

Dimensions

L24 cm

Visual condition

Excelent

Functionality

Functional

TOYS



ID

396

Item name

Garaža za auto

Manufacturer

Lehmann

Year

1940s

Category

Toy

Description

Uz jednu je došao i Sedan auto, ali je smješten pod ID:404

Two vintage Lehmann tinsplate garages, model number 771, lithographed with playful child silhouettes and brickwork base design. The fronts feature round barred windows and the Lehmann logo with "Made in Germany" marking. One garage is accompanied by a period tin or diecast car, the other is the garage only.

Dimensions

12 × 8 × 8 cm

Visual condition

Good

Functionality

Functional

TOYS



ID

364

Item name

Sanjke - dječak s crvenom kapom

Manufacturer

Gescha

Year

1940s

Category

Toy

Description

Vintage lithographed tinplate mechanical toy depicting a boy in red winter attire pushing and riding a yellow-and-blue sled. Produced by Gescha in post-war Germany, this clockwork-operated toy features a clever action where the boy first pushes the sled and then jumps on to ride, with steerable direction via a front lever.

Dimensions

11.4 x 7.6 cm

Visual condition

Excelent

Functionality

Functional

TOYS



ID

365

Item name

Sanjke - dječak s plavom kapom

Manufacturer

Year

1940s

Category

Toy

Description

Small post-war tin and composition clockwork toy depicting a boy lying on a yellow sledge, dressed in blue trousers, red jacket with yellow trim, and blue cap with pom-pom. When wound with a key, the toy propels forward, turns in a circle, and continues moving.

Dimensions

10 cm

Visual condition

Excelent

Functionality

Functional

TOYS



ID

374

Item name

Majmun bez ičega

Manufacturer

Köhler

Year

1940s

Category

Toy

Description

A tin lithographed wind-up toy depicting a circus monkey wearing a red fez and colorful blue/yellow/red costume, holding a green ball. The toy features a comic, realistic walking motion when wound with its attached key. Produced in post-war Germany under U.S. Zone marking, this model is a classic Köhler design from the late 1940s–early 1950s.

Dimensions

H15 cm

Visual condition

Good

Functionality

Functional

TOYS



ID

375

Item name

Majmun na triciklu

Manufacturer

C. K. Arnold & Co.

Year

1940s

Category

Toy

Description

2 komada

Tin lithographed wind-up toy depicting a dressed monkey in a red fez, blue jacket, and orange trousers riding a tricycle. Produced by Arnold shortly after WWII during the US Zone occupation period. The clockwork mechanism propels the trike forward while the monkey pedals. Colorful litho details and whimsical subject reflect postwar German export toy design.

Dimensions

H10 cm

Visual condition

Very Good

Functionality

Functional

TOYS



ID

377

Item name

Maca sa loptom + OVP

Manufacturer

Köhler

Year

1940s

Category

Toy

Description

A post-WWII lithographed tinplate mechanical toy depicting a playful grey-striped kitten pushing a yellow-striped ball. Features a clockwork (wind-up) mechanism causing the cat to move with the ball. Includes original illustrated cardboard box showing matching artwork of a kitten with a ball.

Dimensions

L10 cm

Visual condition

Excelent

Functionality

Functional

TOYS



ID

379

Item name

Medvjed + OVP

Manufacturer

Voith

Year

1940s

Category

Toy

Description

Tinplate wind-up toy depicting a circus bear in a red jacket, blue trousers, and bow tie, pushing against a wall or box. Lithographed tin construction with vibrant multi-color printing. Comes with the original illustrated box showing bears in a nature scene. Marked "GES. GESCH." on toy body (patent mark).

Dimensions

H11 cm

Visual condition

Excelent

Functionality

Functional

TOYS



ID

389

Item name

Motor mali br.11

Manufacturer

Huki Nürnberg (HKN)

Year

1940s

Category

Toy

Description

Small lithographed tinplate motorcycle toy with friction drive mechanism, featuring a rider in red jacket, blue trousers, and white helmet with red stripes. The motorcycle is marked "HKN" on the front and sides, with the number "11" on the rear fender.

Dimensions

L10 cm

Visual condition

Excelent

Functionality

Functional

TOYS



ID

404

Item name

Auto Sedan iz garaže

Manufacturer

Lehmann

Year

1940s

Category

Toy

Description

Garaža ID:396

Dimensions

Visual condition

Functionality

TOYS



ID

411

Item name

TRI-ANG Minic + OVP

Manufacturer

Lines Bros. Ltd.

Year

1940s

Category

Toy

Description

A vintage clockwork (wind-up) steam roller model from the Tri-ang Minic "All to Scale Clockwork Toys" range. Painted in dark green with grey wheels, this tinplate model replicates early 20th-century steam rollers. Operated by a wind-up key (not shown in images but mechanism present). Supplied in its original illustrated cardboard box depicting the roller in a rural setting.

Dimensions

L15 cm

Visual condition

Very Good

Functionality

Functional

TOYS



ID

417

Item name

Tank A 585 + OVP

Manufacturer

Arnold

Year

1940s

Category

Toy

Description

A post-war period tinplate clockwork tank, catalogue number A 585, finished in olive green enamel with white star insignia and "A 585" marking to the rear plate. Features silver-painted tin caterpillar tracks, embossed grille details, and a fixed gun barrel mounted on the turret. Operated by a rear wind-up key slot, the motor drives both tracks for forward movement. Comes complete with the original illustrated cardboard box bearing cartoon scout figures, tank imagery, and the Arnold logo.

Dimensions

L10 cm

Visual condition

Excelent

Functionality

Functional

TOYS



ID

418

Item name

Tank PN 380 + OVP

Manufacturer

Paul Niedermeier

Year

1940s

Category

Toy

Description

A vintage tinplate wind-up military tank toy, model PN 380, known as the "Zick Zack" Panzer. Finished in dark olive green with lithographed rivet and equipment details, the toy features a rotating turret with fixed barrel, four main wheels, and two smaller guiding wheels underneath for its zig-zag movement. Originally sold with a clockwork mechanism that propels the tank forward in an erratic path, sometimes with a sparking effect from a flint mechanism.

Dimensions

L10 cm

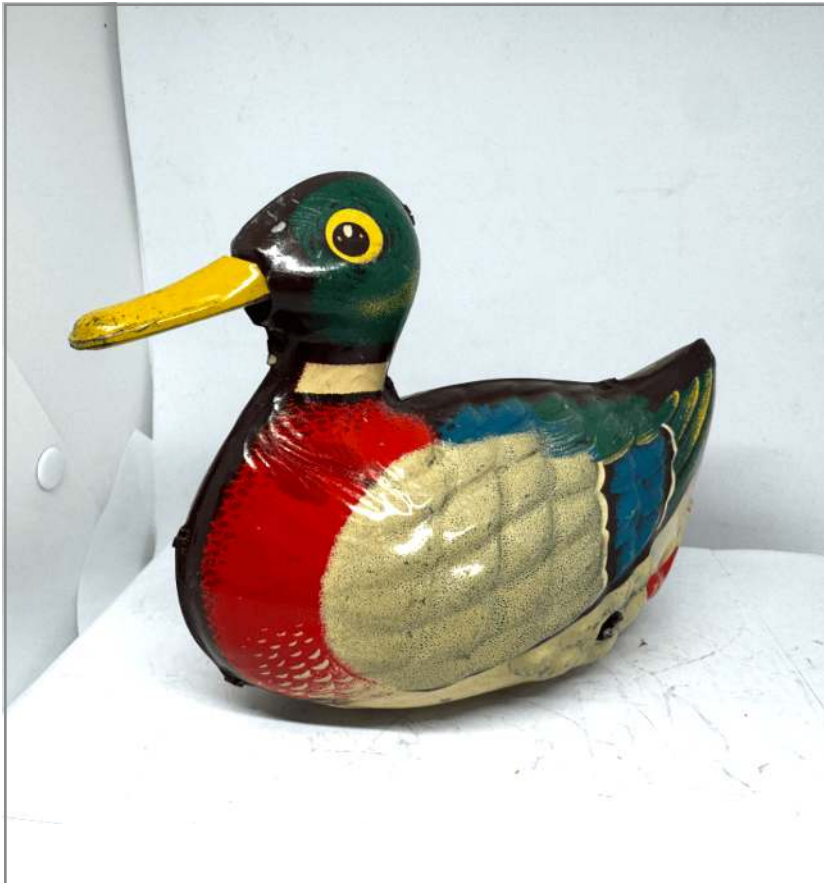
Visual condition

Very Good

Functionality

Functional

TOYS



ID

450

Item name

Patka

Manufacturer

Gescha

Year

1940s

Category

Toy

Description

This is a vibrantly lithographed tin wind-up toy duck produced by Gescha, a German manufacturer well known for its post-war tinfoil toys. The duck represents a colorful drake (male mallard) and is designed to waddle or glide via a wind-up mechanism. The piece features the Gescha logo and is marked "Made in U.S. Zone Germany", situating it firmly in the immediate post-WWII occupation era.

Dimensions

L17 cm

Visual condition

Good

Functionality

Functional

TOYS



ID

517

Item name

Vjetrenjača mala

Manufacturer

Unknown

Year

1940s

Category

Toy

Description

This is a vintage tin lithographed windmill designed as a steam engine accessory (Dampfmaschinen-Betriebsmodell). The piece features a charming, hand-colored depiction of a wooden mill house with illustrated windows, balcony, and residents. Its blades spin when driven by a connected steam engine via pulley and string mechanism. It is marked "Made in Germany U.S. Zone" with model code "X-5051," indicating post-war Allied occupation manufacturing.

Dimensions

H15 cm

Visual condition

Very Good

Functionality

Functional

TOYS



ID

518

Item name

Vjetrenjača velika

Manufacturer

Unknown

Year

1940s

Category

Toy

Description

This vintage tinplate windmill is a charming steam engine accessory featuring an animated scene of a miller leading a donkey in a circular motion around the base of the windmill. The mechanism is powered via an external drive belt from a stationary steam engine. The animated figures, colorful lithography, and kinetic function make it a classic example of German-made steam toy accessories from the mid-20th century.

Dimensions

24 × 19 cm

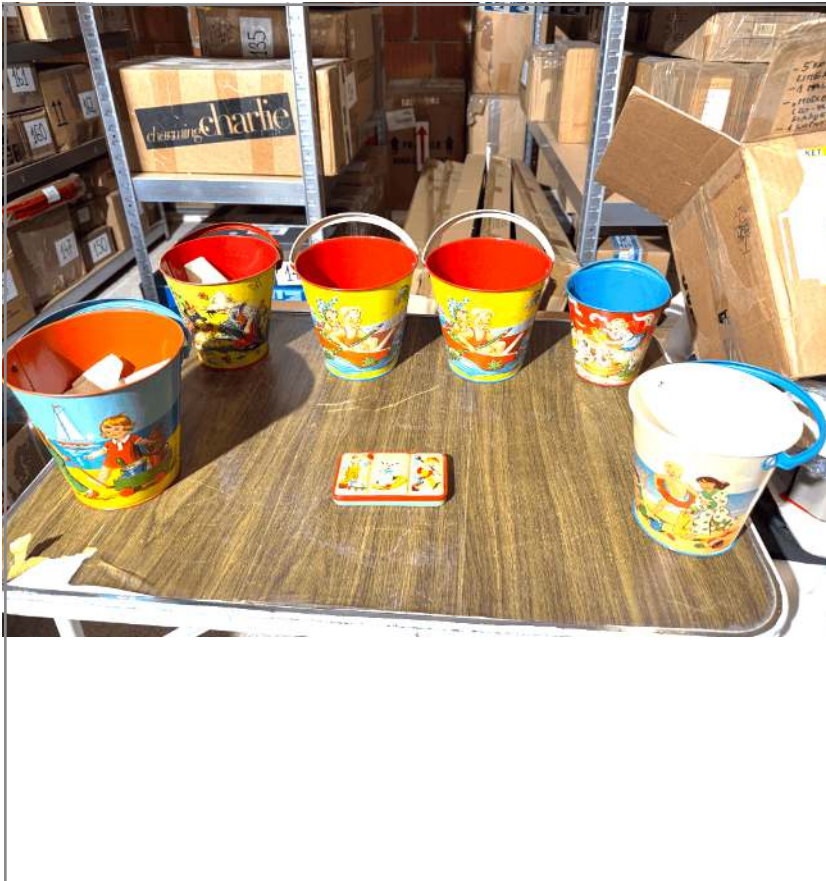
Visual condition

Very Good

Functionality

Functional

TOYS



ID

110

Item name

Dječje okrugle limene kantice

Manufacturer

Various

Year

1940s-1960s

Category

Toy

Description

6 komada - Vodene boje sa slike su ID:111

This is a curated set of six mid-20th century German tinplate sand pails for children, each adorned with colorful lithographed beach-themed or playtime illustrations. These nostalgic toys were popular from the late 1940s to the early 1960s and served both as functional beach items and charming collectibles. The set includes one duplicate, bringing the total of unique designs to five.

Dimensions

H17-23 cm

Visual condition

Very Good

Functionality

Functional

TOYS



ID

007

Item name

Slonić na biciklu sa
suncobranom

Manufacturer

Unknown

Year

1950s

Category

Toy

Description

Made in U.S Zone Germany

This mechanical tin toy features a lithographed elephant dressed in circus regalia, riding a red scooter while balancing colorful clubs on its trunk. The toy is wind-up operated and represents classic postwar circus-themed novelties. It is fully mechanical and made for motion play.

Dimensions

21 x 14 cm

Visual condition

Very Good

Functionality

Functional

TOYS



ID

087

Item name

Dienstmann + OVP

Manufacturer

Hans Geiger

Year

1950s

Category

Toy

Description

Wind-up tinplate figure of a porter ("Dienstmann") in hotel uniform pulling a luggage cart, lithographed in bright colors with mechanical walking movement. Includes original illustrated box with matching artwork. A classic example of 1950s West German postwar tin toys.

Dimensions

13 cm

Visual condition

Excelent

Functionality

Functional

TOYS



ID

123

Item name

Kirmes Schiffschaukel (ljudjačka s 4 čamca)

Manufacturer

A. Brückner

Year

1950s

Category

Toy

Description

This is a rare mechanical tinplate toy carousel with ship swings ("Schiffschaukel"), made by Adolf Brückner in Germany around 1950. It features five suspended gondola-style seats with lithographed child figures and a manually wound clockwork motor. The structure is colorfully lithographed with circus-style motifs and marked "D.R.G.M." on the canopy, indicating registered German design.

Dimensions

23 × 11 × 15 cm

Visual condition

Excelent

Functionality

Functional

TOYS



ID

089

Item name

Vrtuljak veliki

Manufacturer

Unknown

Year

1950s

Category

Toy

Description

Ručni rad, Avioni su u ID:030

Mid-century tinplate wind-up carousel featuring six suspended airplanes. Painted in bright colors with circus-style paneling, the toy rotates when wound, simulating flying aircraft. A classic postwar German fairground-themed toy with working mechanical function and original parts.

Dimensions

32 cm

Visual condition

Good

Functionality

Functional

TOYS



ID

267

Item name

Skating Bear Trio

Manufacturer

TPS Japan

Year

1950s

Category

Toy

Description

Charming mid-20th-century tin lithographed wind-up toy featuring three colorful anthropomorphic bears ice skating in a line. The trio is interconnected and moves together when wound up, a typical whimsical motif from the golden age of Japanese postwar toy production.

Dimensions

21.5 cm

Visual condition

Good

Functionality

Repair needed

TOYS



ID

053

Item name

Tenk A680 s metalnim gusjenicama

Manufacturer

Arnold

Year

1950s

Category

Toy

Description

Vintage tinplate toy tank marked "A 680" and "Made in Germany," produced by Arnold, a key manufacturer of postwar German mechanical toys. It features detailed camouflage lithography and tin tread-style tracks, typical of Arnold's military-themed designs from the 1950s and early 1960s.

Dimensions

14 cm

Visual condition

Good

Functionality

TOYS



ID

015

Item name

Karusel s avionima

Manufacturer

Hoch & Bechmann

Year

1950s

Category

Toy

Description

Pogon na potez, Made in Western Germany

A mechanical tin toy carousel featuring three suspended airplane figures that spin around a central column. Bright lithographed design with colorful detailing on canopy and base. Operates via pull-back mechanism.

Dimensions

H18 cm

Visual condition

Very Good

Functionality

Functional

TOYS



ID

125

Item name

Aerodromska zgrada + 4 aviona
na dvije žice

Manufacturer

Hoch & Bechmann

Year

1950s

Category

Toy

Description

Pažljivo otpakirati zbog celuloidnih propelera aviona!

Mechanical tin toy airport with central tower and rotating boom supporting four tin airplanes. Wind-up mechanism allows planes to rotate and simulate flight. Colorfully lithographed building front includes tower clock and terminal illustration. Base marked "Made in Western Germany." Identified by seller as likely Hoch & Beckmann, not Tippco or Technofix as sometimes mislabeled.

Dimensions

Base W25 cm; H17.5 cm

Visual condition

Very Good

Functionality

Functional

TOYS



ID

158

Item name

Cable Car Seilbahn (žičara)
oznaka 303 + OVP

Manufacturer

Technofix

Year

1950s

Category

Toy

Description

Vintage Technofix tinplate mechanical cable car toy, featuring colourful lithographed scenery with track, lift mechanism and two cars. Includes original box with mountain and cable car artwork. Manual wind-up lift function.

Dimensions

50 x 20 cm

Visual condition

Excelent

Functionality

Functional

TOYS



ID

255

Item name

Anglerspiel (ribič) sa 3 limene ribice

Manufacturer

Blech & Spielwaren

Year

1950s

Category

Toy

Description

This is a rare mechanical tinplate fishing toy from the 1950s, designated Clix 3155. It features a fisherman figure standing on a decorated platform resembling a pond, using a rod to catch tin fish rotating in the water. The toy is spring-driven and operates via wind-up mechanism. The decoration is highly colorful with underwater-themed lithography.

Dimensions

18 x 14 x 20 cm

Visual condition

Good

Functionality

Functional

TOYS



ID

054

Item name

Modle 3 komada i lopatica za pijesak + OVP

Manufacturer

Year

1950s

Category

Toy

Description

Made in Western Germany

A colorful printed cardboard display card featuring vintage children's beach/sand toys: one red plastic scoop and three tin molds (flower and geometric shapes). The items are sewn onto the illustrated card, which shows playful beach scenes.

Dimensions

18 x 23 cm

Visual condition

Excelent

Functionality

Functional

TOYS



ID

188

Item name

Kolica limena

Manufacturer

K Japan

Year

1950s

Category

Toy

Description

Veća, sa glavom bebe i psa, oznaka: "K" Japan, schwungrad pogon

A charming mid-century tinplate wind-up baby buggy with attached friction motor, decorated with colourful lithographed graphics featuring animals, houses and geometric patterns. Comes with original baby head and dog head inside the buggy. This example was produced by "K" (Kojinsha) in Japan, likely post-war, circa 1950s–1960s. A lovely example of classic Japanese tin toy craftsmanship.

Dimensions

16.5 x 9 x 9 cm

Visual condition

Very Good

Functionality

Functional

TOYS



ID

189

Item name

Beba u hodalici

Manufacturer

Unknown from Japan

Year

1950s

Category

Toy

Description

Na navijanje

A delightful vintage tin and celluloid/plastic toy featuring a baby in a metal walker frame with wind-up mechanism. The baby wears a turquoise polka-dot outfit with white collar and beads across the tray. When wound, the baby's feet "walk" inside the metal frame. Typical of post-war Japanese toy production; likely made circa 1950s–1960s.

Dimensions

18 x 9 x 7.5 cm

Visual condition

Very Good

Functionality

Functional

TOYS



ID

069

Item name

Biller "Bimbo" + OVP

Manufacturer

Hans Biller

Year

1950s

Category

Toy

Description

Vintage tinplate wind-up toy featuring a clown driving a red race car, complete with original lithographed box. Produced by Biller in the 1950s, this toy is part of their whimsical post-war line of mechanical toys. Includes working key and intricate litho detailing, especially on the clown figure.

Dimensions

11 cm

Visual condition

Excelent

Functionality

Functional

TOYS



ID

225

Item name

Limena kolica s posteljinom bez
bebe - ozn. 344

Manufacturer

Year

1950s

Category

Toy

Description

Made in Western Germany - Ges.Gesch. - bočno slika djevojčice koja pere i vješa veš na žicu, dobro očuvano

Dimensions

L16 x H12 x W6 cm

Visual condition

Good

Functionality

Functional

TOYS



ID

001

Item name

Boxkampf

Manufacturer

Rühl

Year

1950s

Category

Toy

Description

This is a vintage mechanical tin toy depicting two boxers in a ring, operated by a clockwork (wind-up) mechanism. When activated, the figures simulate a boxing match. The toy is highly detailed with colorful lithographed graphics and lively character illustrations on the base.

Dimensions

H18.5 cm

Visual condition

Excelent

Functionality

Functional

TOYS



ID

278

Item name

Remote Control Helicopter
no.090 - Spiel + OVP

Manufacturer

Biller

Year

1950s

Category

Toy

Description

Wind-up tin toy helicopter playset with remote control function and colorful lithographed design, produced by Biller in the 1950s. Includes helicopter, landing base, control levers, and original printed box. The helicopter rotates around a central dome, imitating takeoff and landing. Highly visual, playful mechanical toy typical of postwar West German production.

Dimensions

Base 22.5 cm

Visual condition

Excelent

Functionality

Functional

TOYS



ID

103

Item name

Kirmes Riesenrad

Manufacturer

Blomer & Schüler

Year

1950s

Category

Toy

Description

This is a vintage tinplate clockwork-operated Ferris wheel toy manufactured by Blomer & Schüler (B&S), Germany. It features colorful lithographed details including clown illustrations, figures in gondolas, and a stylized fairground base. The model is equipped with a mechanical movement and a bell.

Dimensions

25 cm

Visual condition

Very Good

Functionality

Repair needed

TOYS



ID

288

Item name

Žičara mala

Manufacturer

Georg Fischer

Year

1950s

Category

Toy

Description

Mechanical tin lithograph mountain cableway toy by Georg Fischer, featuring two cable cars, winding mechanism, and a scenic Alpine backdrop. Hand-cranked operation drives the gondolas along a wire incline between two lithographed station houses. Colorful litho landscape is integrated into the metal base and backing.

Marked "Made in Western Germany" and "Ges. Gesch."

Dimensions

Base 25-30 cm

Visual condition

Excelent

Functionality

Functional

TOYS



ID

237

Item name

Crazy Clown + OVP

Manufacturer

Yonezawa

Year

1950s

Category

Toy

Description

A colorful tin lithographed wind-up toy depicting a clown driving a car. This variant features a wind-up mechanism housed in the clown's head, a known quirky and playful feature of Yonezawa's postwar designs. Comes with the original illustrated box.

Dimensions

L10.8 cm

Visual condition

Excelent

Functionality

Functional

TOYS



ID

142

Item name

HEINI no.507

Manufacturer

Lehmann

Year

1950s

Category

Toy

Description

Clockwork tin toy figure "Heini" on a tricycle. When wound, the boy rides forward and backward; direction can be adjusted via front wheel. Colorfully lithographed tin construction. Marked "Heini 507 Made in Germany" with Lehmann shield logo. Original piece from the early postwar VEB period, reflecting classic Lehmann wind-up toy design.

Dimensions

15 cm

Visual condition

Excelent

Functionality

Functional

TOYS



ID

013

Item name

Geduldspiele

Manufacturer

Unknown

Year

1950s

Category

Toy

Description

4 komada starijih i 9 komada novijih

This batch includes several round handheld dexterity games featuring brightly illustrated scenes under transparent lids, each containing small metal or plastic balls meant to be guided into recessed holes. Themes include fairy tales (e.g., Little Red Riding Hood), circus performances (e.g., seal balancing balls), and children at play. These were popular mid-century fairground or prize toys in West and East Germany.

Dimensions

5.3–5.6 cm

Visual condition

Good

Functionality

Functional

TOYS



ID

066

Item name

Karusel sa 4 gondole koje se vrte na valovitoj podlozi

Manufacturer

Blömer & Schüler

Year

1950s

Category

Toy

Description

A colorful wind-up tinplate toy carousel featuring four arms with suspended gondola-style vehicles. The gondolas are lithographed with vibrant riders and the base is decorated with a fairground scene. This type of carousel is a classic example of post-war West German tin toy manufacturing by Blomer & Schüler.

Dimensions

Promjer 18-20 cm

Visual condition

Very Good

Functionality

Functional

TOYS



ID

083

Item name

Set za pijesak i ostalo

Manufacturer

Göso

Year

1950s

Category

Toy

Description

Sito limeno s ručkom + mala cvena lopatica + modle 5 komada , Made in US zone Germany

A colorful 1950s tinplate sandbox play set, consisting of a shallow round tub with printed sidewalls and six matching embossed sandbox tools (spade, pig, horseshoe, rooster, monkey, and ladybug shapes), each strung in place with original thread. The set is attractively illustrated and represents a rare surviving example of a full, unused Göso sand toy ensemble.

Dimensions

Diameter 20 cm

Visual condition

Excelent

Functionality

Functional

TOYS



ID

048

Item name

Sladoledar sa zvonom i štapom

Manufacturer

Courtland USA

Year

1950s

Category

Toy

Description

Charming lithographed tin wind-up toy featuring an ice cream vendor seated on a three-wheeled tricycle cart labeled "Ice Cream 5¢". The figure strikes a large mounted bell when the mechanism is engaged. A classic example of American post-war novelty toys from the 1950s.

Dimensions

16.5 cm

Visual condition

Very Good

Functionality

Functional

TOYS



ID

023

Item name

Koffermann

Manufacturer

Fritz Voit

Year

1950s

Category

Toy

Description

A rare mechanical tin figure known as "Koffermann" (suitcase man), made by Fritz Voit. The figure humorously portrays a rotund gentleman carrying a suitcase, dressed in a beige-striped overcoat and hat. The toy walks when wound using a classic clockwork mechanism.

Dimensions

10 cm

Visual condition

Excelent

Functionality

Functional

TOYS



ID

265

Item name

Karusel - veći sa 4 aviona

Manufacturer

Hoch & Bechmann

Year

1950s

Category

Toy

Description

Nema feder, ima priključak na pogonski stroj, drveno postolje, Made in U.S. Zone Germany

Vertical steam-powered tin toy carousel with central tower and six hanging tinplate airplanes with propellers. Designed to be driven by a steam engine flywheel (pulley visible). Decorated with colorful lithographed clown/cartoon band, red and white canopy, and planes marked "H" and "B." Functional, with clear pulley mount. Seller listed as "Blechspielzeug für Dampfmaschine."

Dimensions

H 24 cm

Visual condition

Good

Functionality

Not functional

TOYS



ID

002

Item name

Vatrogasno vozilo HS 510

Manufacturer

Hans Schumann

Year

1950s

Category

Toy

Description

This is a mid-century tinplate fire engine toy marked "HS 510," made by the German manufacturer Hans Schumann. It features lithographed details, rolling wheels, and a

rotating/detachable ladder mounted on top. This version appears to be MIB (Mint in Box) or NOS (New Old Stock).

Dimensions

L10.2 cm

Visual condition

Excelent

Functionality

Functional

TOYS



ID

118

Item name

Čamac 2

Manufacturer

Michael Seidel

Year

1950s

Category

Toy

Description

Sa vjetrobranom, ne radi feder, OVP

Vintage 1950s tinplate clockwork speedboat titled Hurricane, manufactured by MFZ

(Martin Fuchs Zirndorf) in West Germany. This example features a vibrant red, white, and blue paint scheme with detailed lithography, a seated helmsman figure, and the original clear plastic windshield — a part often missing. Powered by a wind-up mechanism with rear-mounted propeller and rudder for real movement in water.

Dimensions

20 cm

Visual condition

Excelent

Functionality

Repair needed

TOYS



ID

088

Item name

Pribor za autodrom

Manufacturer

Hoch & Bechmann

Year

1950s

Category

Toy

Description

Ograda bez autića. Autići su ID:367

Highly decorative wind-up tinplate model of a fairground bumper car ride, manufactured by Hoch & Beckmann. Features two lithographed bumper cars with separate spring motors and striking red/white striped border fence and ticket booth. This is a complete set in excellent functional and visual condition.

Dimensions

55 x 38 cm

Visual condition

Excelent

Functionality

Functional

TOYS



ID

067

Item name

Kupatilo diorama

Manufacturer

Göso

Year

1950s

Category

Toy

Description

This is a mid-century bathroom diorama for dollhouses, combining lithographed tinsplate walls and floor with plastic sanitary furnishings. It features a printed wall with fixtures and tiled effect, a plastic bathtub (with yellow enclosure), washbasin, toilet, and a small pail. Includes original cardboard backing and was originally sold with packaging.

Dimensions

36 x 10 x 13 cm

Visual condition

Excelent

Functionality

Functional

TOYS



ID

030

Item name

Avioni za veliki vrtuljak

Manufacturer

Unknown

Year

1950s

Category

Toy

Description

6 komada (ručni rad), vrtuljak je ID:089

Six tinplate biplane airplanes, originally mounted on a mechanical or wind-up carousel (as seen in the LiveAuctioneers reference). All feature a lithographed figure holding a newspaper or message. The planes are components of a mid-century tin toy carousel, not intended as standalone toys.

Dimensions

Wingspan 14 cm

Visual condition

Good

Functionality

TOYS



ID

260

Item name

Federi za navijanje igračka

Manufacturer

Year

1950s

Category

Toy

Description

5 komada

A mixed set of seven coiled mainsprings, intended for repair or maintenance of vintage wind-up motors, such as those found in tinsplate toys or mechanical novelties. Sizes appear to range from 5 to 8 mm in diameter, suited for various small-scale wind-up mechanisms.

Dimensions

8-7-7-5-5 mm

Visual condition

Good

Functionality

TOYS



ID

283

Item name

Brdo za sanjkanje

Manufacturer

Year

1950s

Category

Toy

Description

2 komada - sa ukupno 3 komada sanjki - jedan komad vrlo dobro očuvan, drugi nešto lošiji

A charming mid-20th century mechanical tin toy featuring a winter-themed scene with children on sleds, riding down a track. The toy includes a built-in wind-up mechanism that propels sleds along the track, imitating a toboggan run with an elevator lift system. Richly lithographed with alpine snow scenes, birch trees, and children in period clothing. Both known examples came with a wind-up key and one or more sleds.

Dimensions

L46 x H14 x W5 cm

Visual condition

Excelent

Functionality

Functional

TOYS



ID

272

Item name

Riesenrad (cirkuski kotač) sa 4
sjedala + OVP

Manufacturer

Hoch & Bechmann

Year

1950s

Category

Toy

Description

Potrebno čišćenje i podmazivanje

Mechanical tinplate Ferris wheel toy with bright lithographed details showing riders and carnival-themed decoration. Includes original illustrated box. Hand-crank or wind-up operated. Intended as a decorative or collector's piece rather than for heavy play. No specific maker listed, but likely German manufacture from the post-war period.

Dimensions

H 20 cm

Visual condition

Very Good

Functionality

Functional

TOYS



ID

027

Item name

Avion Oldtimer Fighting Plane + OVP

Manufacturer

Suzuki & Edwards, Japan

Year

1950s

Category

Toy

Description

Highly detailed lithographed tin friction-powered biplane toy in cream, red, and black. Features striking period graphics and design with pilot figure, metal undercarriage, and rubber wheels. Complete with original illustrated box. A classic example of postwar Japanese tinplate toy craft.

Dimensions

Wingspan 35 cm; L32 cm

Visual condition

Excelent

Functionality

Functional

TOYS



ID

253

Item name

Kistenschieber (čovjek gura sanduk) Wüco

Manufacturer

Fritz Wünerlein & co.

Year

1950s

Category

Toy

Description

Mid-century German wind-up tin toy depicting a man pushing a large crate. The figure is lithographed in vivid colors and features clockwork-driven movement, causing the man to repeatedly push the crate forward and back. A humorous and rare representation of post-war industrial work, often admired for its cartoon-like styling and vibrant lithography.

Dimensions

10 cm

Visual condition

Good

Functionality

Functional

TOYS



ID

098

Item name

Noisemaker (puckalica)

Manufacturer

Unknown

Year

1950s

Category

Toy

Description

10 komada - odlični

Lot of 10 vintage tinsplate "knackfrosch" (clicker toys), each decorated with various colorful printed motifs (children, fairy tale figures, animals). These are classic mechanical noise-makers activated by pressing the domed body. All are finger-sized and feature lithographed tin construction with painted floral or cartoon scenes.

Dimensions

5 cm

Visual condition

Very Good

Functionality

Functional

TOYS



ID

016

Item name

Riesenrad

Manufacturer

Hoch & Bechmann

Year

1950s

Category

Toy

Description

This is a mid-century tinplate mechanical Ferris wheel toy made by Hoch & Beckmann, a lesser-known but high-quality German toy manufacturer. The toy features a colorful lithographed tower and rotating wheel with eight small gondolas carrying children. The charming lithography includes fairground scenes and figures, with the typical geometric diamond patterning and soft pastel hues common for German toys of the era. It is operated by a clockwork mechanism (key included).

Dimensions

18 cm

Visual condition

Excelent

Functionality

Functional

TOYS



ID

095

Item name

Rudnik no.294

Manufacturer

Technofix

Year

1950s

Category

Toy

Description

Bez OVP

This is a vintage mechanical tin toy set titled "Operating Coal Mine Train Set" by Technofix, marked No. 294. It includes a lithographed tinplate mountain structure with an integrated incline track system, a spring-powered locomotive, a coal wagon with lithographed "coal" cargo, and a Technofix wind-up key. The set mimics a coal mining operation with automatic uncoupling and gravity-return features — a hallmark of Technofix's intricate engineering.

Dimensions

30 cm

Visual condition

Good

Functionality

Functional

TOYS



ID

203

Item name

Zračna luka s 4 zrakoplova

Manufacturer

Hoch & Bechmann

Year

1950s

Category

Toy

Description

Made in Western Germany, 1953.g

A colorful tin lithographed toy airport set by Hoch & Beckmann, featuring a central air traffic control tower and twin hangar bays. Includes the wind-up mechanism with four revolving tin airplanes, plus two free-standing planes. This toy combines stationary litho scenes (travelers, pilots) with kinetic play value.

Dimensions

25 x 27 cm

Visual condition

Excelent

Functionality

Functional

TOYS



ID

008

Item name

Klauni glazbeni (par)

Manufacturer

Emil Hausmann

Year

1950s

Category

Toy

Description

A charming lithographed tin wind-up toy featuring two seated clowns named Roberto and Antonio — one playing a drum, the other cymbals. Made by Emil Hausmann Nürnberg (EHN), this mechanical toy simulates a musical clown duet when wound. Notably, identical figures were used in a 1963 Fluxus art performance by Joseph Beuys

Dimensions

22 cm

Visual condition

Excelent

Functionality

Functional

TOYS



ID

116

Item name

Zvrk limeni 2

Manufacturer

Karl Rohrseitz (Zirndorf), MFZ,
and Fuchs

Year

1950s

Category

Toy

Description

3 komada, od toga 1 u OVP

A mixed lot of three vintage German tin lithographed spinning tops (Brummkreisel), variously decorated with colorful child-friendly illustrations. One top is noted to come with its original box. Makers include Karl Rohrseitz (Zirndorf), MFZ, and Fuchs (model "Choral").

Dimensions

14 / 15 / 15 cm

Visual condition

Very Good

Functionality

Functional

TOYS



ID

003

Item name

Dječja kolica

Manufacturer

Likely German

Year

1950s

Category

Toy

Description

Limena Paya veća (replika)

A lithographed tin toy doll carriage or pram, designed for use as a decorative display item for dolls. Features colorful litho graphics on the side panels (children playing), a blue cloth canopy, and four wheels with red centers. Made entirely of tin with printed detailing; the canopy appears to be original fabric.

Dimensions

20 x 21 x 8 cm

Visual condition

Excelent

Functionality

Functional

TOYS



ID

006

Item name

Riesenrad tip 25

Manufacturer

Hoch & Bechmann

Year

1950s

Category

Toy

Description

This is a colorful tinplate wind-up Ferris wheel made by Hoch & Beckmann, depicting a traditional German fairground attraction ("Kirmes"). The toy features six suspended gondolas with printed passenger figures and a vibrant red-yellow color scheme. Clockwork motor mounted at the rear with bell. Height approx. 25 cm.

Dimensions

25 cm

Visual condition

Very Good

Functionality

Repair needed

TOYS



ID

280

Item name

Dock Yard Crane + OVP

Manufacturer

Line Mar Toys

Year

1950s

Category

Toy

Description

Tinplate mechanical dockyard crane toy with lithographed graphics and wind-up mechanism, including original box and accessory paper. Highly decorative piece featuring vibrant seaport-themed artwork and functioning crane operated by lever and key.

Dimensions

25-30 cm

Visual condition

Excelent

Functionality

Not functional

TOYS



ID

359

Item name

Kovač sa nakovnjem

Manufacturer

Fleischmann

Year

1950s

Category

Toy

Description

Mechanical tinplate accessory depicting a blacksmith hammering on an anvil, designed to be driven by a belt from a stationary steam engine. Mounted on a rectangular metal base with a hand-painted blacksmith figure in a red apron. The hammer arm operates when connected to a running steam engine.

Dimensions

22 x 14 x 12 cm

Visual condition

Good

Functionality

Functional

TOYS



ID

367

Item name

Auti na sudaranje od Autodroma

Manufacturer

Year

1950s

Category

Toy

Description

2 komada. Ovo su autići od Autodroma ID:088

Dimensions

Visual condition

Functionality

TOYS



ID

376

Item name

Psi sa kobasicom + OVP

Manufacturer

Niedermeier

Year

1950s

Category

Toy

Description

OVP je jako loš

Pair of lithographed tinplate toy dogs joined by a brown "sausage" in their mouths, moving towards each other when wound. Produced in post-war Germany for export, these toys were a whimsical representation of the economic recovery period.

Dimensions

28 cm

Visual condition

Excelent

Functionality

Functional

TOYS



ID

390

Item name

Motoristi na skuteru no.282

Manufacturer

Technofix

Year

1950s

Category

Toy

Description

Bijelo staklo

A colorful lithographed tinplate friction-powered scooter toy depicting a man and woman riding together, complete with a clear plastic windshield and detailed clothing patterns. The toy is from Technofix's post-war range of friction motorcycles and scooters, notable for their bright graphics and realistic rider figures.

Dimensions

L23 cm

Visual condition

Good

Functionality

Functional

TOYS



ID

397

Item name

Vrtuljak sa četiri brodića

Manufacturer

Blomer & Schüler

Year

1950s

Category

Toy

Description

Kutija nije spakirana. Vani je u vrećici ja mislim. ID:530

A vintage tinsplate fairground carousel toy with four suspended boats carrying two lithographed figures each. The canopy is painted in red and cream alternating segments, supported by thin suspension rods, with a lithographed base depicting colorful fairground scenes including cowboys and archers. This is a wind-up model with a lever-wind mechanism.

Dimensions

H28 cm

Visual condition

Excelent

Functionality

Functional

TOYS



ID

398

Item name

Express-Boy + OVP

Manufacturer

Gescha

Year

1950s

Category

Toy

Description

Kutija je uzeta iz ID:370

Lithographed tin wind-up mechanical toy depicting a hotel or train station porter pushing a brown suitcase decorated with travel labels. Manufactured by Gescha, a German toy company active in the mid-20th century, this model is known as "Express-Boy" (No. 57-1).

Dimensions

Visual condition

Excelent

Functionality

Functional

TOYS



ID

400

Item name

Radnik s kutijom

Manufacturer

WUCO

Year

1950s

Category

Toy

Description

Post-war tinplate mechanical wind-up toy depicting a longshoreman in blue overalls and checkered shirt pushing a large freight crate marked "New York" and "Mexico." The figure features lithographed details including a sailor's tattoo, and the toy operates via a key-wound clockwork mechanism that moves the man and crate in a pushing motion. Original illustrated cardboard box depicts a smiling dockworker with crate and two children.

Dimensions

H13 cm

Visual condition

Very Good

Functionality

Functional

TOYS



ID

410

Item name

Auto HP-001 + OVP

Manufacturer

HPZ

Year

1950s

Category

Toy

Description

Rare postwar German tinplate wind-up limousine toy with driver figure and opening side door mechanism. When wound, the car drives forward, stops, door opens, driver figure emerges, then door closes and the car continues driving. Lithographed in bright red with cream roof, rubber tyres, adjustable front wheels for circular driving.

Dimensions

L15 cm

Visual condition

Excelent

Functionality

Functional

TOYS



ID

414

Item name

Tank T.60

Manufacturer

GAMA

Year

1950s

Category

Toy

Description

Large postwar tinplate military tank with clockwork drive, manufactured by GAMA. Model marked "T.60" on the rotating turret, painted in olive green with printed rivet detail, white stars, and a red star emblem on turret rear. Features a long extendable main gun barrel, mounted machine gun, opening commander's hatch, and a flexible metal antenna. Heavy-duty rubber caterpillar tracks with realistic bogie wheels.

Dimensions

L27 cm

Visual condition

Excelent

Functionality

Functional

TOYS



ID

419

Item name

Sladoledar MZ 556

Manufacturer

Unknown

Year

1950s

Category

Toy

Description

Tin-lithographed wind-up toy depicting a cheerful ice cream vendor pushing a two-wheeled "EIS / ICE CREAM" cart. The vendor figure is partly composition (legs) and painted in bright red, white, and blue, wearing a cap and smiling face. The cart is decorated on all sides with colorful litho graphics, including a chef character and children enjoying ice cream. Operated by a clockwork mechanism, the toy propels forward, simulating the vendor pushing the cart.

Dimensions

Visual condition

Excelent

Functionality

Functional

TOYS



ID

424

Item name

Oštrač

Manufacturer

Arnold

Year

1950s

Category

Toy

Description

This is a post-war tinplate mechanical toy manufactured by Arnold, depicting a bald man sharpening scissors on a grinding wheel, powered by a clockwork motor with a belt drive. The motor's casing is stylized to resemble an electric engine. When wound, the wheel turns, and the figure simulates cutting/sharpening action.

Dimensions

14 x 7 x 11 cm

Visual condition

Good

Functionality

Functional

TOYS



ID

438

Item name

Kolica za prtljagu velika

Manufacturer

Finnegan

Year

1950s

Category

Toy

Description

A lithographed tinplate windup toy depicting a smiling porter (Finnegan) pushing a yellow baggage cart stacked with colorful luggage pieces, trunks, and a U.S. mail bag. The graphics are vibrant and highly detailed, featuring a mix of red, yellow, and silver tones, as well as the company's signature clown logo. The cart operates via windup mechanism with a "bump-n-go" action: the cart moves forward and backward, automatically changing direction when encountering obstacles using rotating front wheels. The toy includes a stop/start lever on the platform base.

Dimensions

L35 cm

Visual condition

Very Good

Functionality

Functional

TOYS



ID

442

Item name

Djevojčica s loptom

Manufacturer

TPS (Tokyo Plaything Shokai)

Year

1950s

Category

Toy

Description

Nisam siguran gdje je kutija. Potražiti.

A charming and fully mechanical wind-up tin toy featuring a young girl named "Suzy" bouncing a colorful striped ball. The toy portrays a classic 1950s depiction of playtime and is geared toward girls, with bright lithography and charming detailing. When wound, the mechanism causes Suzy to appear to bounce the ball with lifelike motion. The toy comes with its original illustrated box showing playful children in a suburban neighborhood setting, enhancing its display and collector value.

Dimensions

H13 cm

Visual condition

Excelent

Functionality

Functional

TOYS



ID

362

Item name

Isetta 700 auto

Manufacturer

Bandai, Japan

Year

1950s

Category

Toy

Description

A vintage tinplate model of the BMW Isetta microcar, manufactured by Bandai, Japan. This 1950s/60s friction-drive (flywheel) version features lithographed details, including a checkered red/yellow seat interior, dashboard, and mechanical undercarriage print. The front-opening door design mirrors the real Isetta's iconic entry system.

Dimensions

16 cm long

Visual condition

Good

Functionality

Functional

TOYS



ID

363

Item name

Kolica sa novinama

Manufacturer

Märklin

Year

1950s

Category

Toy

Description

Tinplate accessory cart for model railways, painted in cream with light pink interior and black lettering "Bücher & Zeitungen" (Books & Newspapers) on the sides and "Zeitungen" (Newspapers) on the top panel. Comes with 8 original miniature printed newspapers. Four spoked red metal wheels, black handle grips.

Dimensions

Spur 0 / Spur 1; L14 x W6 x H8 cm

Visual condition

Excelent

Functionality

Functional

TOYS



ID

366

Item name

Tank A 585

Manufacturer

Arnold

Year

1950s

Category

Toy

Description

A pair of post-WWII tinplate wind-up tanks, model A 585, produced in the U.S. Zone of Germany during the 1950s. These military-style toys are hand-lithographed in dark green with white star insignia and "A 585" markings. Both feature pressed metal caterpillar tracks and a fixed gun barrel, powered by a clockwork mechanism with key wind (original keys not confirmed). Originally designed to produce sparks from the turret muzzle when operated, via an internal flint mechanism.

Dimensions

L9.5 x W6 x H5 cm

Visual condition

Good

Functionality

Functional

TOYS



ID

370

Item name

Čovjek gura prtljagu 2

Manufacturer

Gescha

Year

1950s

Category

Toy

Description

A vintage lithographed tin mechanical toy depicting a uniformed hotel porter pushing a large suitcase decorated with colorful travel labels. Operated by a clockwork wind-up mechanism that propels the porter forward. The toy is in the later post-war blue-uniform variation, compared to the earlier 1930s red-uniform models.

Dimensions

Visual condition

Excelent

Functionality

Functional

TOYS



ID

371

Item name

Kofferträger

Manufacturer

Fritz Voit

Year

1950s

Category

Toy

Description

A lithographed tinplate mechanical figure of a man in a green herringbone trench coat and bowler hat, carrying a large suitcase decorated with colorful travel stickers. Powered by a clockwork (wind-up) mechanism, the figure walks in a circular path while holding the suitcase. This model is a scarce post-war German toy, notable for its detailed lithography and intact travel sticker designs.

Dimensions

H12 cm

Visual condition

Excelent

Functionality

Functional

TOYS



ID

372

Item name

Kofferträger Model No. 661

Manufacturer

MS (Martin Schmidt)
Brandenburg

Year

1950s

Category

Toy

Description

Vintage lithographed tinplate wind-up toy depicting a stout male traveler in a brown checkered coat and bowler hat, carrying a large rectangular suitcase. The suitcase features printed travel graphics, including "Astoria" and "Lindenhof" logos. The figure walks when the clockwork mechanism is wound.

Dimensions

H12 cm

Visual condition

Good

Functionality

Functional

TOYS



ID

378

Item name

Majmun na autiću + OVP

Manufacturer

Köhler

Year

1950s

Category

Toy

Description

A vintage wind-up tin and plastic toy depicting a monkey in a fez hat riding a three-wheeled Dutch-style tricycle. Features bright lithographed tin parts in blue, red, brown, and yellow, with a molded plastic frame and mechanical steering. Original 1950s German production.

Dimensions

L9 cm

Visual condition

Excelent

Functionality

Functional

TOYS



ID

381

Item name

Motorist MAC 700

Manufacturer

Arnold

Year

1950s

Category

Toy

Description

Vintage post-war tinplate motorcycle toy with lithographed rider, modeled as the "MAC 700" racing motorbike. Features Arnold's distinctive lithography with mechanical detailing of the engine, frame, and tyres. Wind-up motor with a mechanical rider that rises and lowers while moving.

Dimensions

L20 cm

Visual condition

Excelent

Functionality

Functional

TOYS



ID

382

Item name

Motorist JW

Manufacturer

Joseph Wagner

Year

1950s

Category

Toy

Description

A post-WWII German-made tinplate friction-powered motorcycle toy featuring a rider in red and yellow racing suit with yellow helmet, bent over in a racing position. The black motorcycle has detailed lithographed features including "JW" logo on fuel tank, silver engine detailing, and printed "Dunlop" tires.

Dimensions

L20 cm

Visual condition

Excelent

Functionality

Functional

TOYS



ID

386

Item name

Red Toy Car (old)

Manufacturer

Japan

Year

1950s

Category

Toy

Description

Izobličeno podvozje kod jednog kotača

Red lithographed tin convertible, based on the original Japanese HS-500 design. Marked HS-500 at rear, with pop-up driver mechanism and litho driver wearing yellow hat. Shares body shape, mechanism, and proportions with Japanese version, but minor litho and detailing differences suggest later European production.

Dimensions

L10 cm

Visual condition

Good

Functionality

Functional

TOYS



ID

388

Item name

Đokej na konju + OVP

Manufacturer

Göso

Year

1950s

Category

Toy

Description

Vintage tinplate wind-up toy depicting a boy in jockey attire riding a hobby horse, mounted on a bright red and yellow numbered base (#4). The toy operates with a clockwork mechanism, causing the figure to move in a circular path while rocking forward and backward. Includes original illustrated box featuring colorful racing scenes.

Dimensions

8.5 × 10 cm

Visual condition

Excelent

Functionality

Functional

TOYS



ID

412

Item name

Gliser 2035 + OVP

Manufacturer

Arnold

Year

1950s

Category

Toy

Description

Postwar German wind-up tin toy cabin cruiser by Arnold, finished in cream with colourful lithographed deck details and Dutch flag at stern. Designed for bathtub or pool play, with a clockwork propeller drive operated by a separate key. Original illustrated cardboard box shows playful child with boat in water, carrying the Arnold triangular logo and "U.S. Zone Germany" mark.

Dimensions

L13 cm

Visual condition

Excelent

Functionality

Functional

TOYS



ID

415

Item name

Manuvrier Tank M 65-5 + OVP

Manufacturer

Gescha

Year

1950s

Category

Toy

Description

Na slikama ima i ključ.

Tinplate military tank with wind-up mechanism and manoeuvring function. Olive-green lithographed finish with turret markings "165" and target symbols, detailed rivet and panel artwork. Equipped with rotating turret, long gun barrel, and cream-coloured rubber caterpillar tracks. Comes with original illustrated cardboard box showing action scene and operating instructions.

Dimensions

L20 cm

Visual condition

Excelent

Functionality

TOYS



ID

443

Item name

Pas s loptom

Manufacturer

Fritz Voigt

Year

1950s

Category

Toy

Description

A charming mid-century tinplate wind-up toy featuring a spotted brown-and-white dog walking upright while pushing a colorful striped beach ball. The dog is dressed in a bright red skirt adorned with yellow flowers and wears a red bow around its neck. The lithographed tin gives the toy a humorous and endearing appearance, with the mechanical motion allowing the dog to push the ball as it moves. Attributed to Fritz Voigt, a German maker of novelty wind-up figures in the 1950s.

Dimensions

H11 cm

Visual condition

Very Good

Functionality

Functional

TOYS



ID

451

Item name

Patka s kolicima i pačićima

Manufacturer

Lehmann

Year

1950s

Category

Toy

Description

This is a whimsical lithographed tin wind-up toy featuring a large duck pulling a cart full of three ducklings. Produced by the famed German toy manufacturer Lehmann, the toy is known for its charming action where the duck waddles and the ducklings rotate as the toy moves. The name "QUACK-QUACK / PAAK-PAAK" is marked prominently on the underside, along with multiple international patent references. A classic example of early 20th-century mechanical toy ingenuity, it represents Lehmann's lighter and more animated design style, aimed at children and collectors alike.

Dimensions

Visual condition

Good

Functionality

Functional

TOYS



ID

453

Item name

Motorist narančasti

Manufacturer

Year

1950s

Category

Toy

Description

This is a vintage tinplate friction-powered motorcycle toy featuring a male rider in red racing attire with goggles and helmet, hunched over a striking blue motorbike. The toy displays classic post-war German styling and vibrant lithographed details.

Dimensions

Visual condition

Excelent

Functionality

Functional

TOYS



ID

454

Item name

Motoristi na skuteru no.282

Manufacturer

Technofix

Year

1950s

Category

Toy

Description

This is a vintage tin friction scooter toy depicting two riders in colorful outfits. The toy, made by Technofix, is a vivid and charming example of postwar West German tinsplate production. The male driver is dressed in a red and yellow striped top with blue trousers, while the female passenger sports a blue polka-dot jacket and red plaid trousers, both rendered in bright lithography.

Dimensions

L18 cm

Visual condition

Excelent

Functionality

Functional

TOYS



ID

460

Item name

Mlinar

Manufacturer

Fleischmann

Year

1950s

Category

Toy

Description

This vintage tinplate accessory depicts a standing workman operating a large grinding wheel mounted on a metal frame. Designed to be powered via a live steam engine, the figure is crank-operated and part of Fleischmann's range of steam engine-driven work scenes.

Dimensions

H13 cm

Visual condition

Excelent

Functionality

Functional

TOYS



ID

530

Item name

Kutija od vrtuljka

Manufacturer

Year

1950s

Category

Toy

Description

Kutija od vrtuljka ID:397

Dimensions

Visual condition

Very Good

Functionality

TOYS



ID

257

Item name

Glazbeni dječji limeni mlinovi

Manufacturer

Various

Year

1950s-1960s

Category

Toy

Description

This is a curated collection of seven crank-operated tinplate music boxes (also referred to as “Drehorgeln” or “Spieldosen”), primarily made in Western Germany during the 1950s to early 1960s. Each piece features distinctive lithographed artwork in bright enamel paint with child-friendly themes such as outdoor play, vehicles, animals, fairy-tale motifs, and trains. All toys are manually operated via a side-mounted or top-mounted crank and produce a mechanical melody when turned.

Dimensions

Various

Visual condition

Very Good

Functionality

Functional

TOYS



ID

100

Item name

Baby pribor za čišćenje komplet

Manufacturer

VEB Waschmittelwerk Genthin
(ATA)

Year

1950s-1960s

Category

Toy

Description

(oznaka Ges.Gesch) + OVP

A complete vintage cleaning playset for a dollhouse, made in East Germany (DDR) during the mid-20th century. The set includes realistic miniature household cleaning tools and supplies, all packed in the original illustrated cardboard box. The ATA-branded cleanser box is a central feature, referencing a well-known DDR scouring powder.

Dimensions

22 x 8 x 6 cm

Visual condition

Excelent

Functionality

Functional

TOYS



ID

081

Item name

Zvrk limeni 1

Manufacturer

Rohrseitz

Year

1950s-1970s

Category

Toy

Description

Veći, 3 komada

This lot comprises three vintage mechanical spinning tops ("Brummkreisels") made primarily of lithographed tinplate with wooden components (handles and bases). Each top features colorful illustrations, likely dating from the 1950s–1970s, and reflects mid-century German toy design. The lot includes one model clearly marked "Karl Rohrseitz GmbH & Co. KG, Zirndorf," while the others are unmarked but stylistically consistent with German or West German production of the same era.

Dimensions

Diameter 18 cm

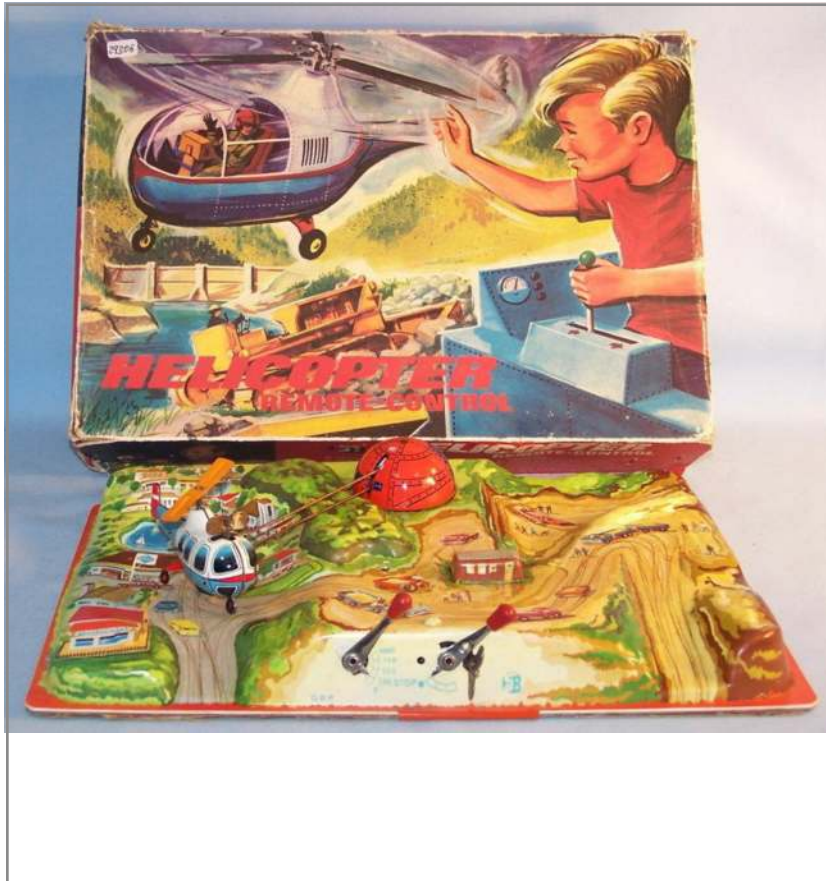
Visual condition

Excelent

Functionality

Functional

TOYS



ID

281

Item name

Remote Control Helicopter -
Tischspiel + OVP

Manufacturer

Biller

Year

1960s

Category

Toy

Description

Oznaka 199, isprobano, prva verzija

Colorful mechanical tabletop game featuring a tinplate helicopter operated via manual levers simulating remote control. Includes lithographed cardboard base with a 3D scenic layout. Helicopter moves forward via wind-up mechanism. First version of this model. Complete with box.

Dimensions

34.5 x 23.5 cm

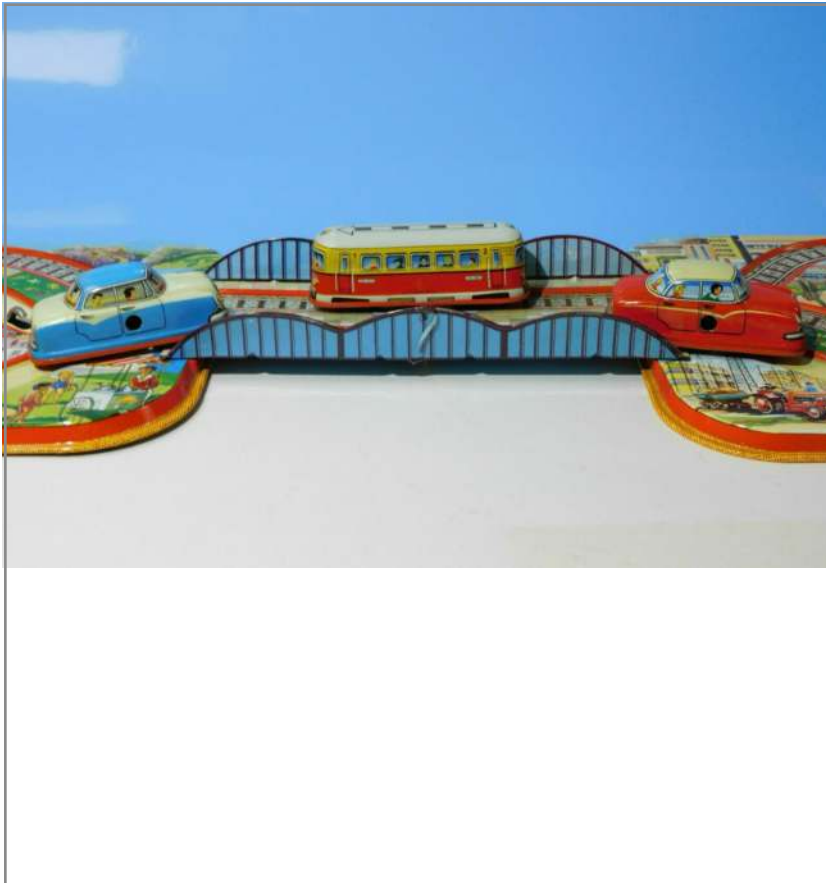
Visual condition

Excelent

Functionality

Functional

TOYS



ID

229

Item name

"Country tour" 301

Manufacturer

Technofix

Year

1960s

Category

Toy

Description

OVP, 2-teilige klappbare Bahnplatte, 2 automobila + šinobus

Large lithographed tinplate wind-up playset featuring a fold-out roadway with two cars and one railbus vehicle operating on a dual-lane track system. Known as the "Country Tour," this model was part of Technofix's highly detailed scenic travel-themed series. Includes original illustrated box.

Dimensions

60 cm

Visual condition

Very Good

Functionality

Functional

TOYS



ID

194

Item name

Dva zeca na navijanje (od toga 1 s korpom na leđima)

Manufacturer

Köhler

Year

1960s

Category

Toy

Description

Two original German tinplate wind-up rabbits by Köhler, made circa 1945–1970.

Osterhase (42054): Lithographed brown rabbit with felt ears, carries a colourful Easter basket with eggs.

Hüpfender Hase (42053): Lithographed standing rabbit with felt ears, hopping motion when wound.

Both made from tin with felt details; bright lithographed finish.

Dimensions

7 cm; 8.5 cm

Visual condition

Very Good

Functionality

Functional

TOYS



ID

014

Item name

Veš mašina na navijanje

Manufacturer

Yonezawa (Japan)

Year

1960s

Category

Toy

Description

A mechanical tin toy designed as a miniature washing machine, titled "Crystal Washing Machine." It features vibrant lithographed graphics showing a girl with laundry, and includes mechanical parts imitating a wash cycle. The toy was sold in its original illustrated cardboard box (OVP).

Dimensions

18x12 cm

Visual condition

Excelent

Functionality

Functional

TOYS



ID

226

Item name

Sabena Helibus br. 5100

Manufacturer

Arnold

Year

1960s

Category

Toy

Description

Helikopter sa žicom - nedostaje prednji točak, za dijelove ?, ima OVP

Tinplate toy helicopter with plastic rotor blades, marked "SABENA" and "00-SAB" in reference to the Belgian airline. Mechanically wind-up operated with rolling wheels and rotating rotors. Model No. 5100, originally sold in a lithographed box. Civil aviation theme, stylized after a Sikorsky-type helicopter.

Dimensions

L21 cm

Visual condition

Good

Functionality

Repair needed

TOYS



ID

061

Item name

Camping 304 + 2 auta + 2 ključa + OVP

Manufacturer

Technofix

Year

1960s

Category

Toy

Description

Colorful mechanical tinplate playset featuring a camping scene with track layout and two wind-up cars. Includes key-wound mechanism and vibrant lithographed artwork depicting camp life with figures, tents, and water features. A classic example of Technofix's detailed scenic toy sets from the 1960s.

Dimensions

45 x 25 cm

Visual condition

Very Good

Functionality

Functional

TOYS



ID

117

Item name

Speedboat Hurricane

Manufacturer

Michael Seidel

Year

1960s

Category

Toy

Description

Bez vjetrobrana, mehanizam zapinje

Tin friction-powered speedboat named Hurricane, made by MFZ (Martin Fuchs) in the 1960s. Designed to operate on water, this model features a painted tin hull with bold red, white, and blue racing graphics and a seated captain figure. Originally equipped with a clear plastic windshield.

Dimensions

20 cm

Visual condition

Good

Functionality

Repair needed

TOYS



ID

373

Item name

Majmun na kotaču

Manufacturer

Köhler

Year

1960s

Category

Toy

Description

A vintage tinplate and plastic mechanical toy by Köhler, depicting a circus monkey in a red fez and colorful uniform, riding a large high wheel while holding a green ball. Operated by a wind-up mechanism, the monkey's legs and arms move as the wheel turns, simulating riding action. Comes with original illustrated box showing the monkey holding a parasol in a circus scene with a clown.

Dimensions

H15 cm

Visual condition

Good

Functionality

Functional

TOYS



ID

401

Item name

Apollo UFO Nr. 562

Manufacturer

Year

1960s

Category

Toy

Description

Vintage tin lithographed friction-powered flying saucer toy, decorated with colorful space-themed graphics including astronauts and stars. The toy features three thin metal antennae on the dome and is housed in its original illustrated cardboard box depicting a red "Apollo" saucer in space. The friction drive causes the center dome to spin while the saucer rolls forward.

Dimensions

Diameter 15 cm

Visual condition

Mint

Functionality

Functional

TOYS



ID

416

Item name

Manuvrier Tank M 65-5

Manufacturer

Gescha

Year

1960s

Category

Toy

Description

Mid-century tinplate military tank with clockwork drive and manoeuvring function, finished in olive green with lithographed blue and yellow mechanical details. Turret marked "65" on one side, "0" on the other, and decorated with star insignia. Features include a rotating turret, long silver-and-green gun barrel, spark-producing machine guns, steering control via lever, and cream rubber caterpillar tracks.

Dimensions

L18 cm

Visual condition

Excelent

Functionality

Functional

TOYS



ID

455

Item name

Speed King bumper-car

Manufacturer

Yoshiya

Year

1960s

Category

Toy

Description

A whimsical vintage tin wind-up bumper car toy named Speed King, manufactured by Yoshiya (KO Toys) in postwar Japan. The toy features a comical driver with a polka-dotted outfit and a whimsical face, complete with a yellow flag at the rear. Classic mid-century Japanese interpretation of American amusement park culture, capturing the aesthetics and humor of the 1950s–60s era.

Dimensions

15.2 x 12.7 cm

Visual condition

Good

Functionality

Functional

TOYS



ID

801

Item name

Loop the Loop

Manufacturer

Technofix

Year

1960s

Category

Toy

Description

This is a striking vintage tinsplate mechanical racing toy named Loop the Loop, produced by Technofix as model number 326. The set features a vividly lithographed amusement park-style track with twin vertical loops and ramped curves, designed for small tin race cars to navigate the track through gravity and momentum. The base is highly detailed with spectators, signage (e.g., "Cassa," "Sensation Attraction," "Direction"), and advertising for brands like Shell and Continental. The original box is included, decorated with images of children playing and featuring the same theme graphics as the base.

Dimensions

L61 cm

Visual condition

Excelent

Functionality

Functional

TOYS



ID

099

Item name

Geduldspiele

Manufacturer

Unknown

Year

1960s-1980s

Category

Toy

Description

14 komada - novije proizvodnje, ali lošiji.

Na slici ih ima više, nisu svi ostavljeni.

A mixed lot of 14 vintage patience games, often referred to as “Geduldsspiele,” featuring various printed motifs under plastic tops—ranging from animals, cartoons, cherubs, to sports scenes. These small round puzzles contain tiny metal balls to be maneuvered into holes or recesses, testing dexterity and patience. Items are housed in lightweight tin or plastic housings.

Dimensions

Promjer 5-6 cm

Visual condition

Good

Functionality

Functional

TOYS



ID

051

Item name

Vogel 5900 - Ptica limena s ključem + OVP

Manufacturer

Veb Spielwaren GDR

Year

1970s

Category

Toy

Description

Small tin wind-up toy bird known as "PickPick," featuring a vibrantly lithographed design and packaged in its original illustrated box. Upon winding, the bird hops forward rhythmically. Produced in the German Democratic Republic (GDR), this item was likely intended as an inexpensive novelty or children's toy reflecting Eastern Bloc toy design trends.

Dimensions

10 cm

Visual condition

Excelent

Functionality

Functional

TOYS



ID

385

Item name

Red Toy Car (new) + OVP

Manufacturer

Schylling

Year

1970s

Category

Toy

Description

A lithographed tin convertible car in bright red with white detailing, marked HS-500 to rear. Features a wind-up mechanism that propels the car forward while the driver's head pops up from the cockpit. Front grille and side trim in mid-century streamlined style; litho driver with patterned shirt and hat.

Dimensions

12.7 x 6.35 cm

Visual condition

Mint

Functionality

Functional

TOYS



ID

387

Item name

Bijeli Martini Shell auto

Manufacturer

Lemezaru Gyar (HU)

Year

1970s

Category

Toy

Description

Small lithographed tin toy race car with driver's head popping up mechanism. White body with Martini Racing livery in blue, pink, and black, plus "Shell" sponsor logos. Driver wears a red helmet. Tin litho driver torso and interior detailing visible through printed windscreen frame.

Dimensions

L10.5 cm

Visual condition

Good

Functionality

Functional

TOYS



ID

232

Item name

Toonerville Trolley electric

Manufacturer

Rich Art Tin / C&M Enterprises

Year

1980s

Category

Toy

Description

0 gauge + original kutija, reproduction by C & M, (cijena 400 \$ sa stanicom i figurama) - drugi dio je ID: 060

Tinplate electric trolley in cartoon-style design, part of a novelty collector series inspired by the early 20th-century "Toonerville Folks" comic. The trolley features bright lithographed tin construction, a humorous motorman figure, and a working electric headlight. This example comes in original illustrated box (OVP).

Dimensions

L14 cm

Visual condition

Good

Functionality

Functional

TOYS



ID

233

Item name

Toonerville Trolley electric

Manufacturer

C&M Enterprises

Year

1980s

Category

Toy

Description

This is a reproduction of the iconic Toonerville Trolley character vehicle, originally based on the early 20th-century comic strip by Fontaine Fox. Manufactured in tinplate by C&M Enterprises in the U.S.A., this electric-powered O-scale trolley features a colorful lithographed design, a whimsical silhouette of the conductor "Skipper", and a working electric headlamp. The reproduction stays faithful to the playful charm of the original pre-war toys, with an added motorized mechanism and solid build quality.

Dimensions

Spur 0; L14 x W11 x H17 cm

Visual condition

Excelent

Functionality

Functional

TOYS



ID

060

Item name

Toonerville depot

Manufacturer

Rich Art (C&M Enterprises)

Year

1980s

Category

Toy

Description

Kućica i figure - drugi dio je ID: 232

A brightly lithographed tinsplate O scale set depicting the comical Toonerville Trolley and town station. Includes electric trolley, depot platform, and 8 magnetic character figures. This set captures the charm of the early 20th-century comic strip by Fontaine Fox. The trolley features a working electric headlamp and movable driver figure. The characters include Aunt Eppie Hogg, Mickey McGuire, "Tomboy" Taylor, Little Jimmy, and others.

Dimensions

19 x 27 cm

Visual condition

Excelent

Functionality

Functional

TOYS



ID

384

Item name

Torpeauto crveni + OVP

Manufacturer

Unknown

Year

1980s

Category

Toy

Description

A vintage Hungarian tinplate friction-powered toy car, labeled "Dodzsem" (meaning "bumper car" in Hungarian) with a driver figure wearing a black helmet. The toy features lithographed red bodywork with yellow and black racing-style graphics and the text "dodzsem" on the side. The driver's head acts as the activation mechanism – pressing it propels the car forward. Presented with its original illustrated cardboard box, which depicts a cartoon driver in a red car.

Dimensions

9.2 × 5.2 × 5 cm

Visual condition

Excelent

Functionality

Functional

TOYS



ID

050

Item name

Avion Kranich Flugzeug

Manufacturer

Düsseldorfer Spielzeug
Manufaktur (DSB)

Year

1990s

Category

Toy

Description

Detailed hand-assembled tinplate wind-up toy airplane representing an early biplane design. Made by the boutique German maker DSB (Düsseldorfer Blechspielzeug), known for postwar artisanal tinplate reproductions. The toy is fully functional with spring-wound motor and rotating propeller.

Dimensions

Wingspan 27-30 cm

Visual condition

Mint

Functionality

Functional

TOYS



ID

049

Item name

Sladoledar

Manufacturer

Tucher & Walter

Year

1993.

Category

Toy

Description

Modern reproduction tinplate wind-up toy by Tucher & Walther featuring a stylized street vendor ringing a bell beside a decorated ice cream cart ("Eis Gelati Glaces"). This example is a limited-edition collector's item made in the traditional German tin toy style.

Dimensions

16.5 cm

Visual condition

Mint

Functionality

Functional

TOYS



ID

080

Item name

Wartburg 311 coupe model
vozila

Manufacturer

Revell

Year

2000s

Category

Toy

Description

Highly detailed die-cast 1:18 scale model of the Wartburg 311 Coupé, produced by Revell around 2001. The model is presented in red-beige color scheme, mimicking the classic East German automobile design of the 1950s–60s. This example was sold as a display model, described as unused and damage-free, with original packaging (OVP).

Dimensions

Scale 1:18

Visual condition

Mint

Functionality

Functional

TOYS



ID

097

Item name

Model bicikla BIANCHI

Manufacturer

Unknown

Year

2000s

Category

Toy

Description

Plavi, novi

An extremely detailed metal scale model of a classic racing-style bicycle, described as a BIANCHI-style "Holland-Fahrrad" with functional mechanical features. Includes working chain drive, functional front and rear brake cables, and a foldable kickstand. Designed likely as a collectible or decorative piece rather than a toy.

Dimensions

Visual condition

Excelent

Functionality

Functional

TOYS



ID

292

Item name

"Old-Smoky" Parni valjak s priborom

Manufacturer

Wilesco

Year

2000s

Category

Toy

Description

Live steam model of a vintage road roller called "Old Smokey," manufactured by Wilesco. This is a working steam-powered toy intended for collectors and enthusiasts, designed in the style of early 20th-century traction engines. It includes original box, instructions, fuel tablets (Esbit), and accessories.

Dimensions

L27 x H16 x W13 cm

Visual condition

Excelent

Functionality

Functional

TOYS



ID

462

Item name

Kutija od Motora A-560

Manufacturer

Arnold

Year

2000s

Category

Toy

Description

Re-print

The reproduction box for the Arnold 560 Police Motorcycle toy typically sells in the range of €10–€20 depending on condition and seller. It is considered a novelty or display item rather than a collectible with significant standalone value. On WorthPoint, an example of this exact box (reproduction) sold for around \$15 USD, confirming it's more decorative than rare.

Dimensions

Visual condition

Excelent

Functionality

TOYS



ID

529

Item name

Robotić + OVP

Manufacturer

Walter & Prediger

Year

2000s

Category

Toy

Description

This is a modern reproduction tinplate wind-up robot toy featuring vibrant lithographed detailing, designed in a classic retro-futuristic style. The robot plays a drum as it moves, evoking the charm of mid-20th century mechanical toys. Sold as a collectible, not intended for children's play.

Dimensions

H10 cm

Visual condition

Mint

Functionality

Functional

TOYS



ID

262

Item name

Gusjenice nove gumene za
Gama T-60 tenk

Manufacturer

Classic Tin Toy Company (USA)

Year

2010s

Category

Toy

Description

4 para - Ozn. C7040304

A mixed lot of reproduction rubber treads for GAMA T60 tinplate tanks. Includes different tread profiles and dimensions (some with gear-like lugs, others smooth), suitable for restoring larger scale wind-up GAMA tanks, notably the T-60 model. These treads are not original GAMA stock but high-quality reproductions made specifically for vintage toy restoration.

Dimensions

11mm x 37cm

Visual condition

Mint

Functionality